

The Decline and Future Recovery of the Rusty Blackbird: A Workshop

January, 24, 2008

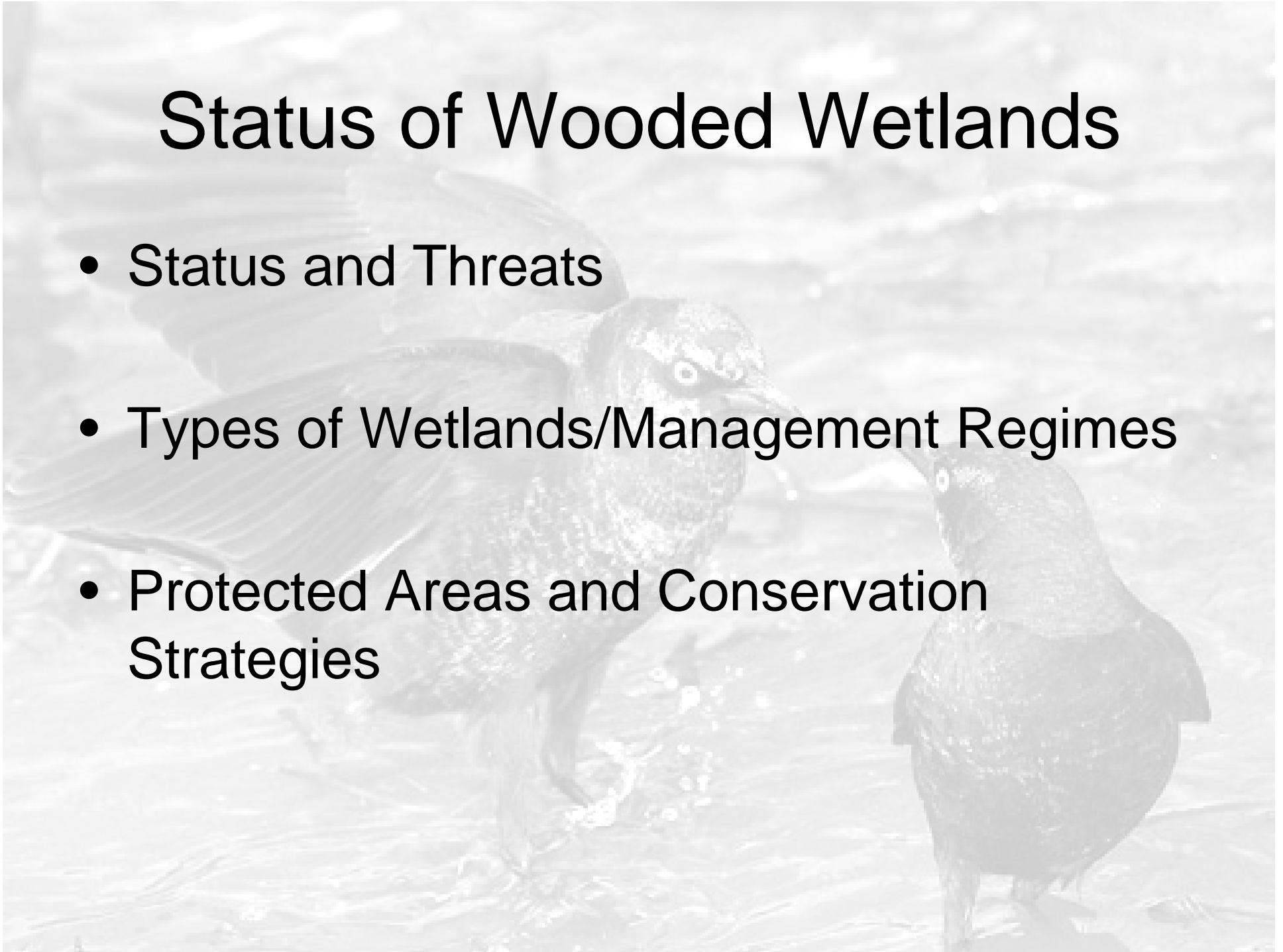
ACE Basin National Wildlife
Refuge, South Carolina



Atlantic Coast Joint Venture

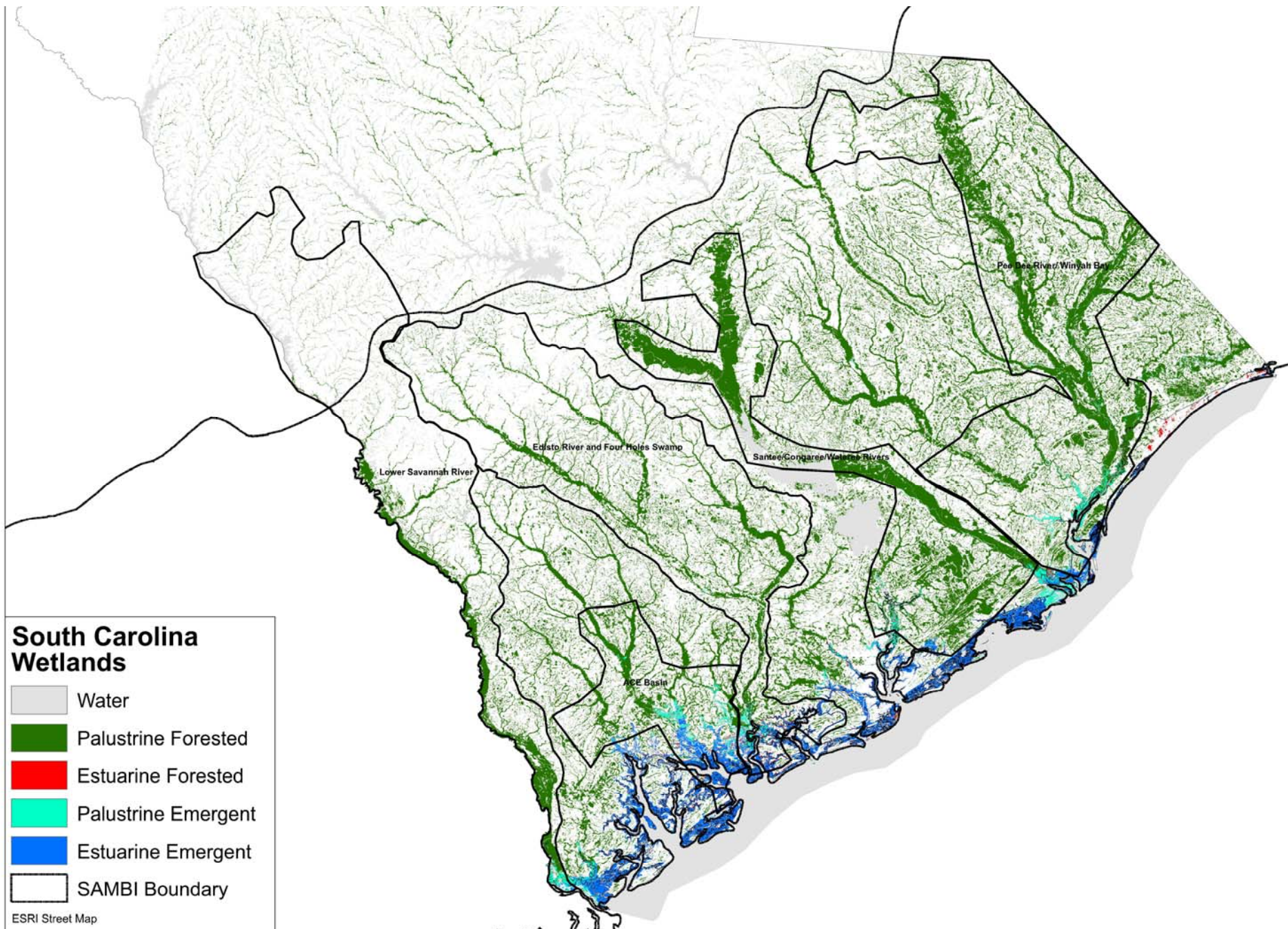
Status of Wooded Wetlands

- Status and Threats
- Types of Wetlands/Management Regimes
- Protected Areas and Conservation Strategies



A grayscale photograph of two seabirds, possibly boobies, on a rocky, uneven ground. The bird on the left is larger and has its wings partially spread, showing detailed feather patterns. The bird on the right is smaller and stands upright, facing the larger bird. The background is a textured, rocky surface. The text "Status and Threats" is centered over the image in a bold, black, sans-serif font.

Status and Threats



**Draft SE REGAP Land Cover
2001 (August 2007) with Audubon HCA's**

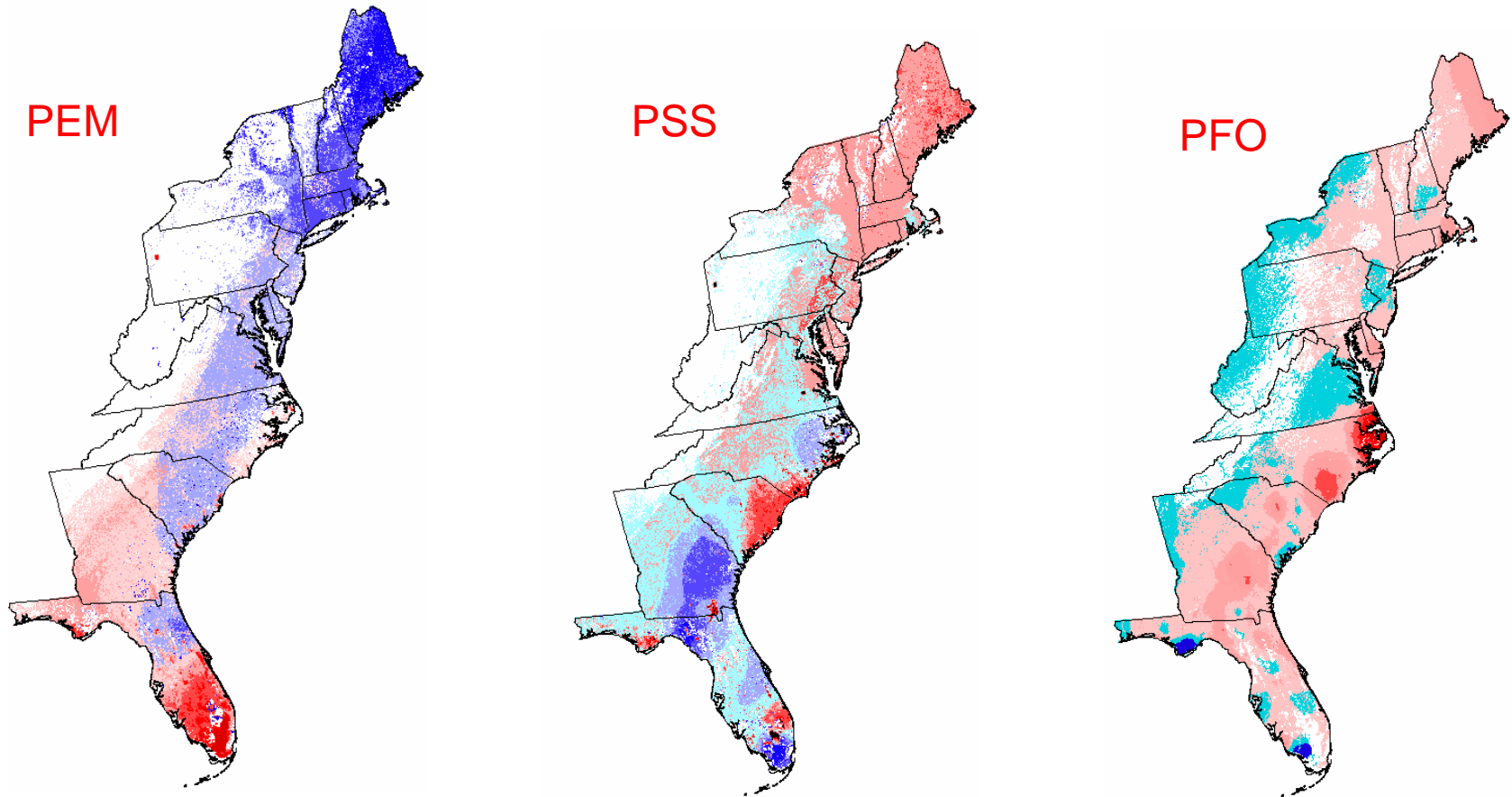


0 25 50 75 100 Kilometers

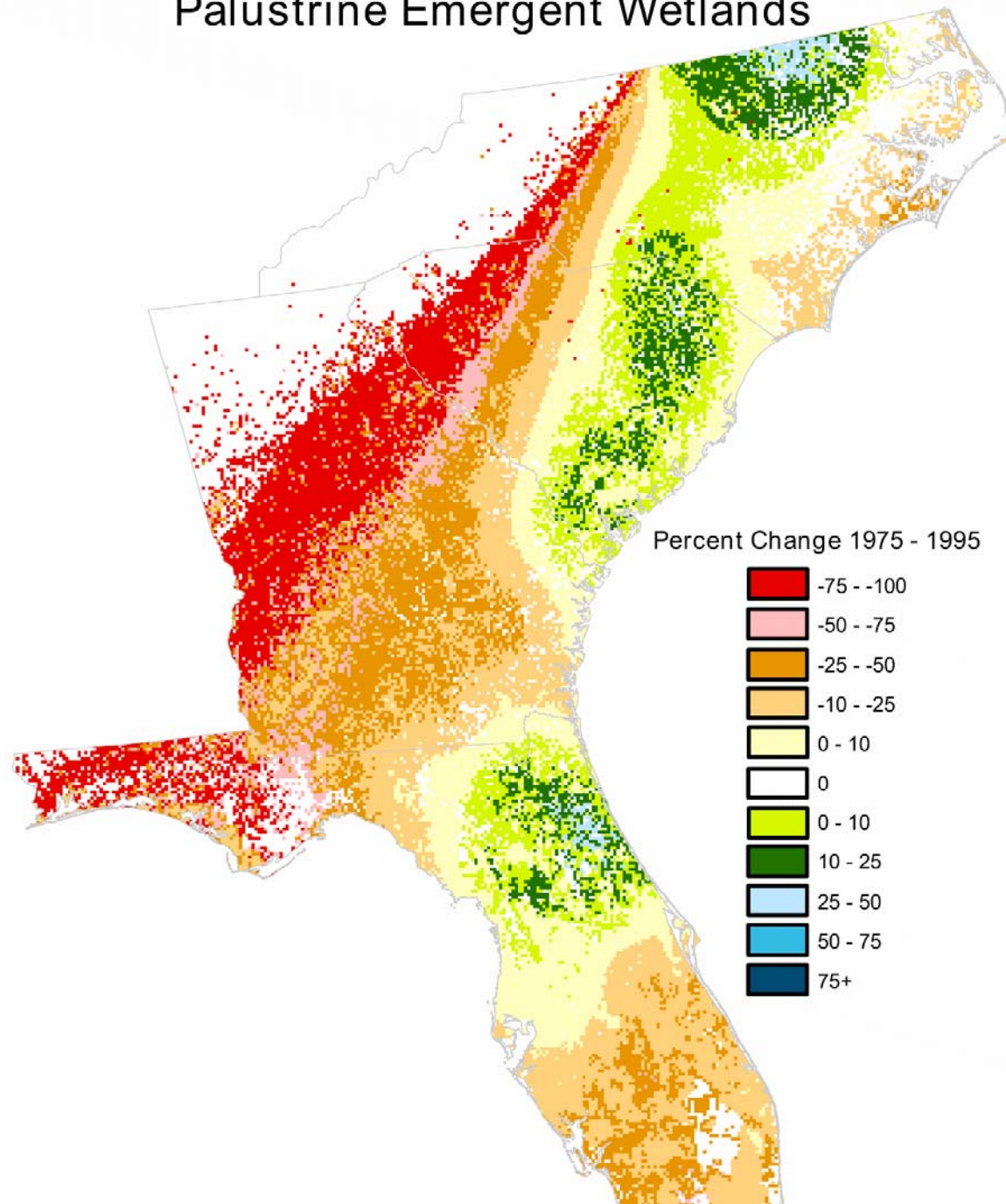
Atlantic Coast Joint Venture
Sanibel, FL 33957
December 2007



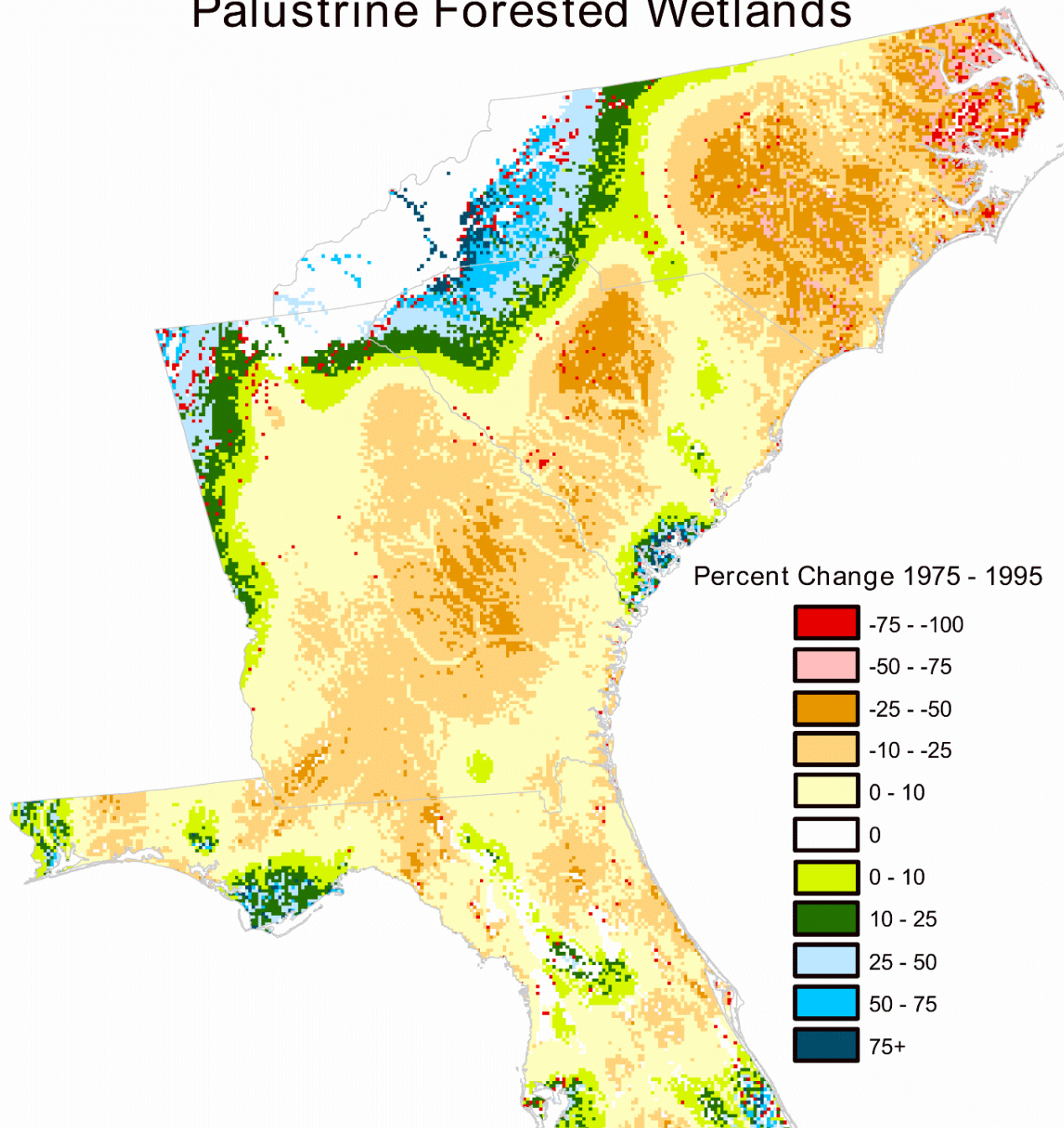
Flyway Scale Habitat Change Analysis – Wetland area change from the mid-1970s to mid-1990s



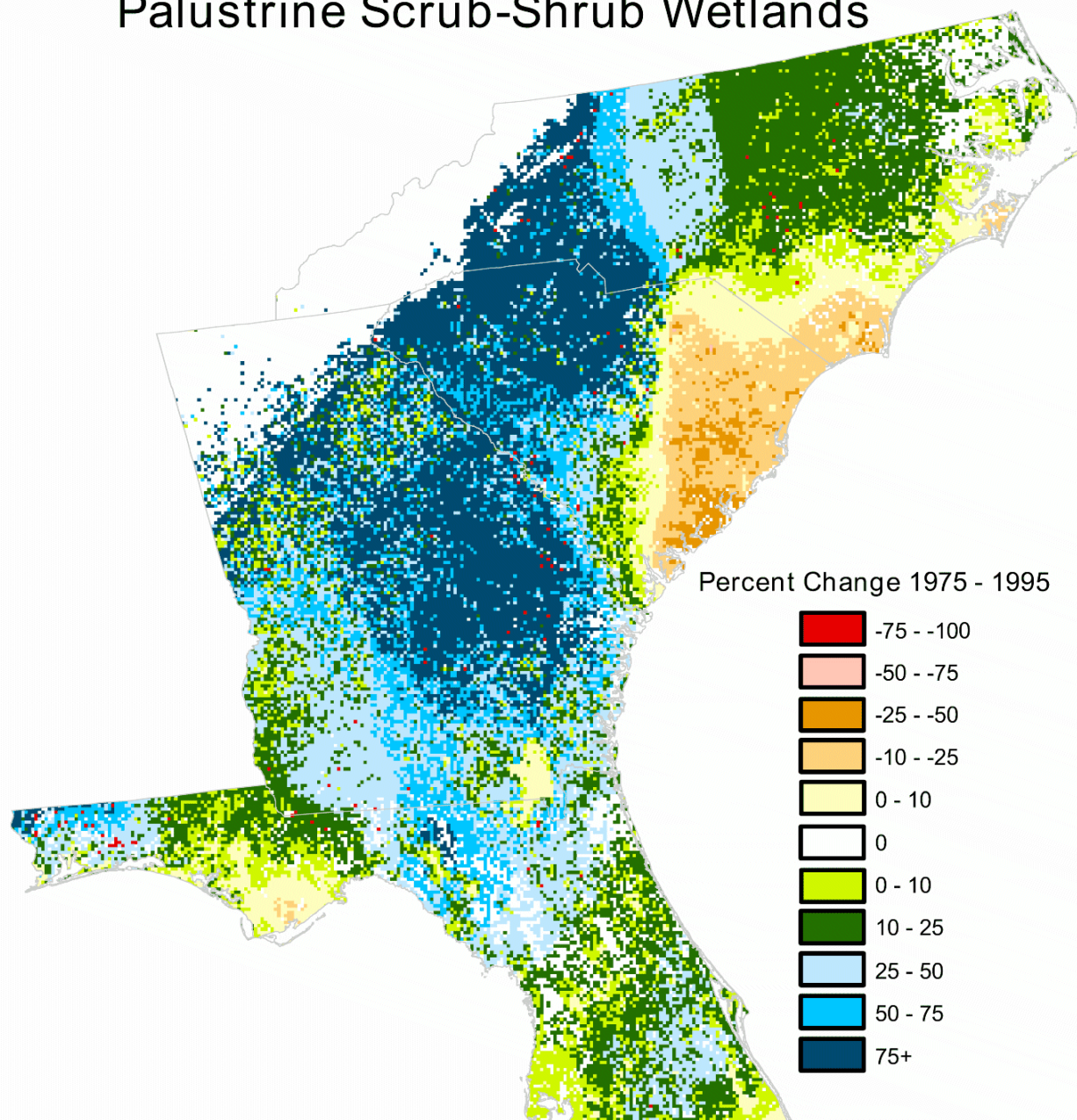
Palustrine Emergent Wetlands



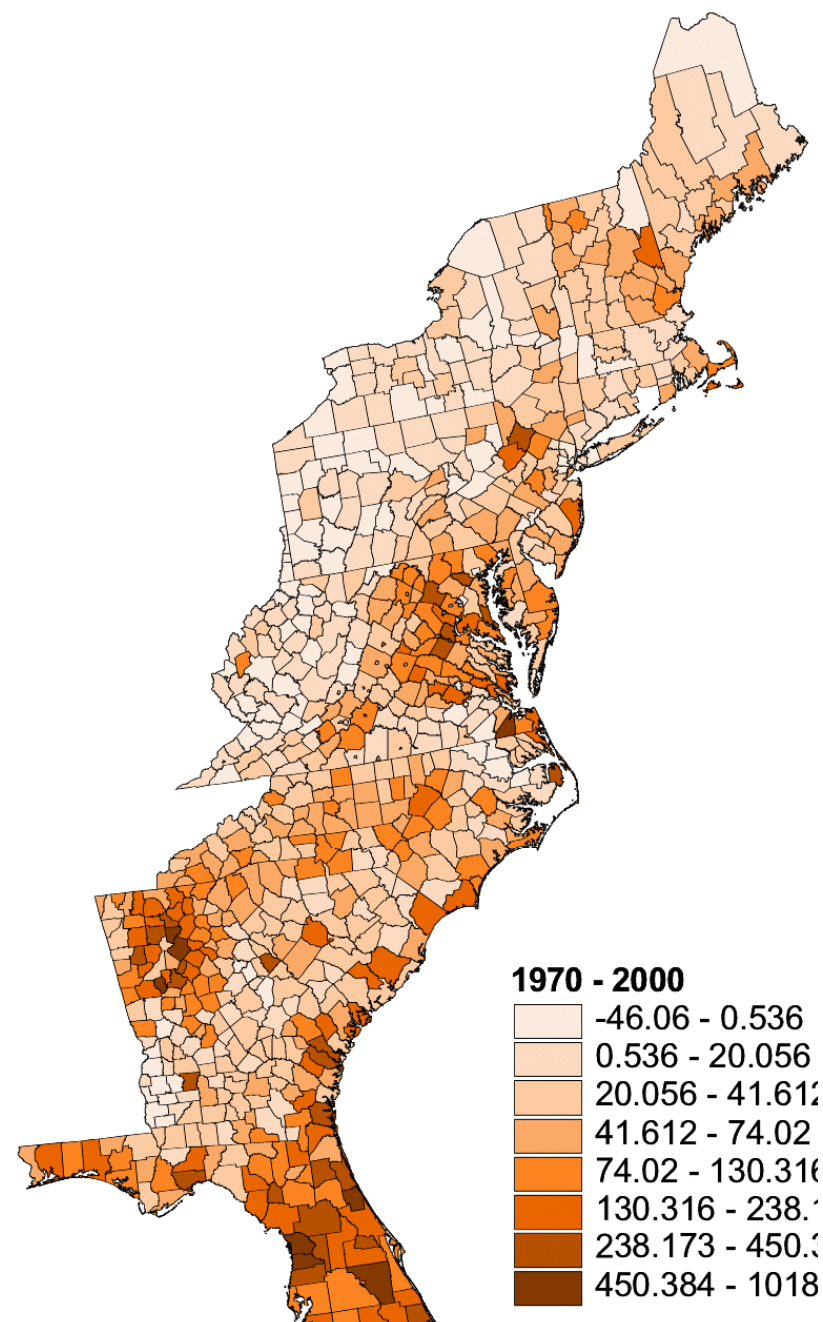
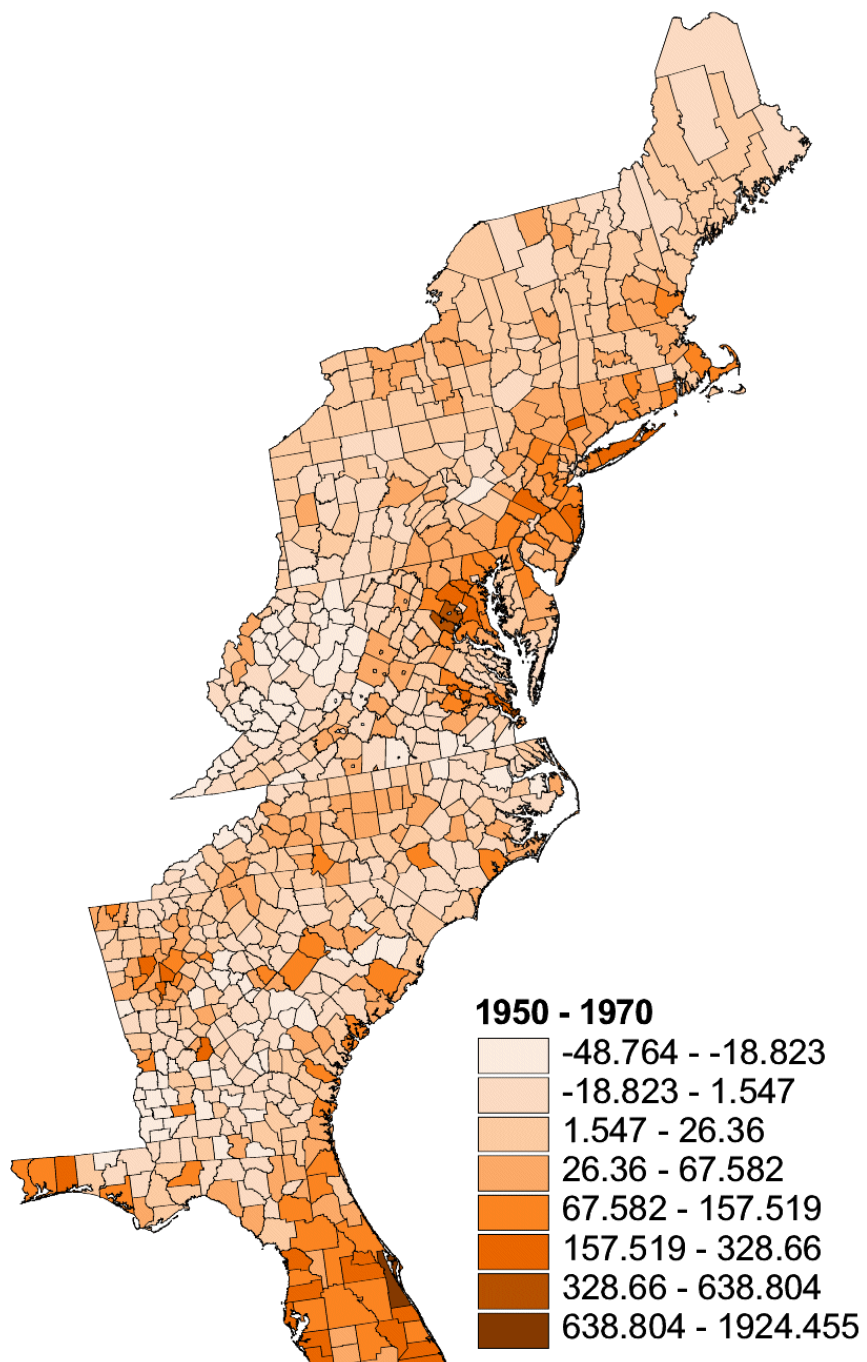
Palustrine Forested Wetlands



Palustrine Scrub-Shrub Wetlands



Percent Population Change





UGA1118124

A faded background image of two birds, possibly shorebirds, standing in a wetland or marshy area. The birds are dark-colored with some lighter markings. The background is a soft, out-of-focus landscape with water and vegetation.

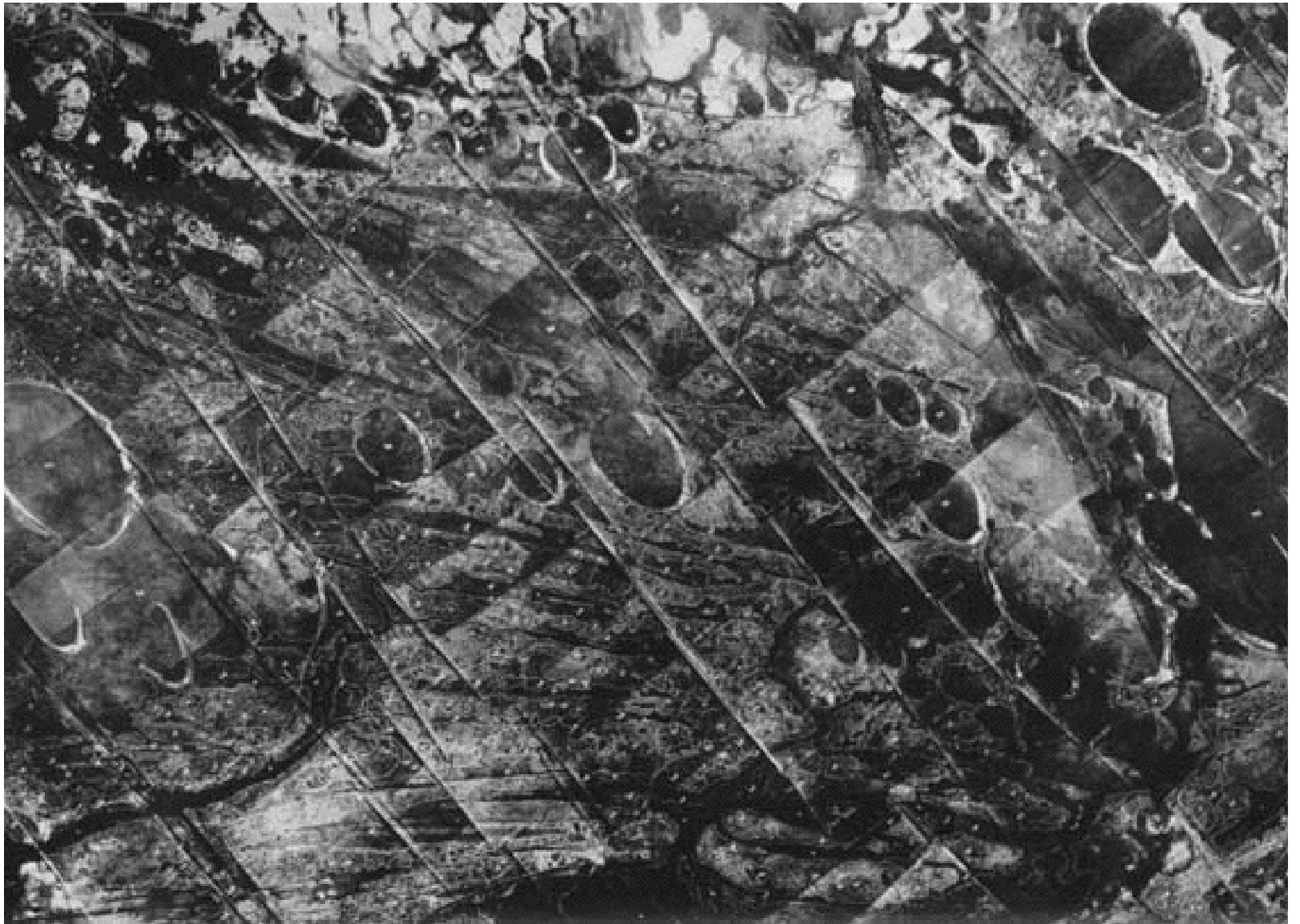
Types of Wetlands Management Regimes

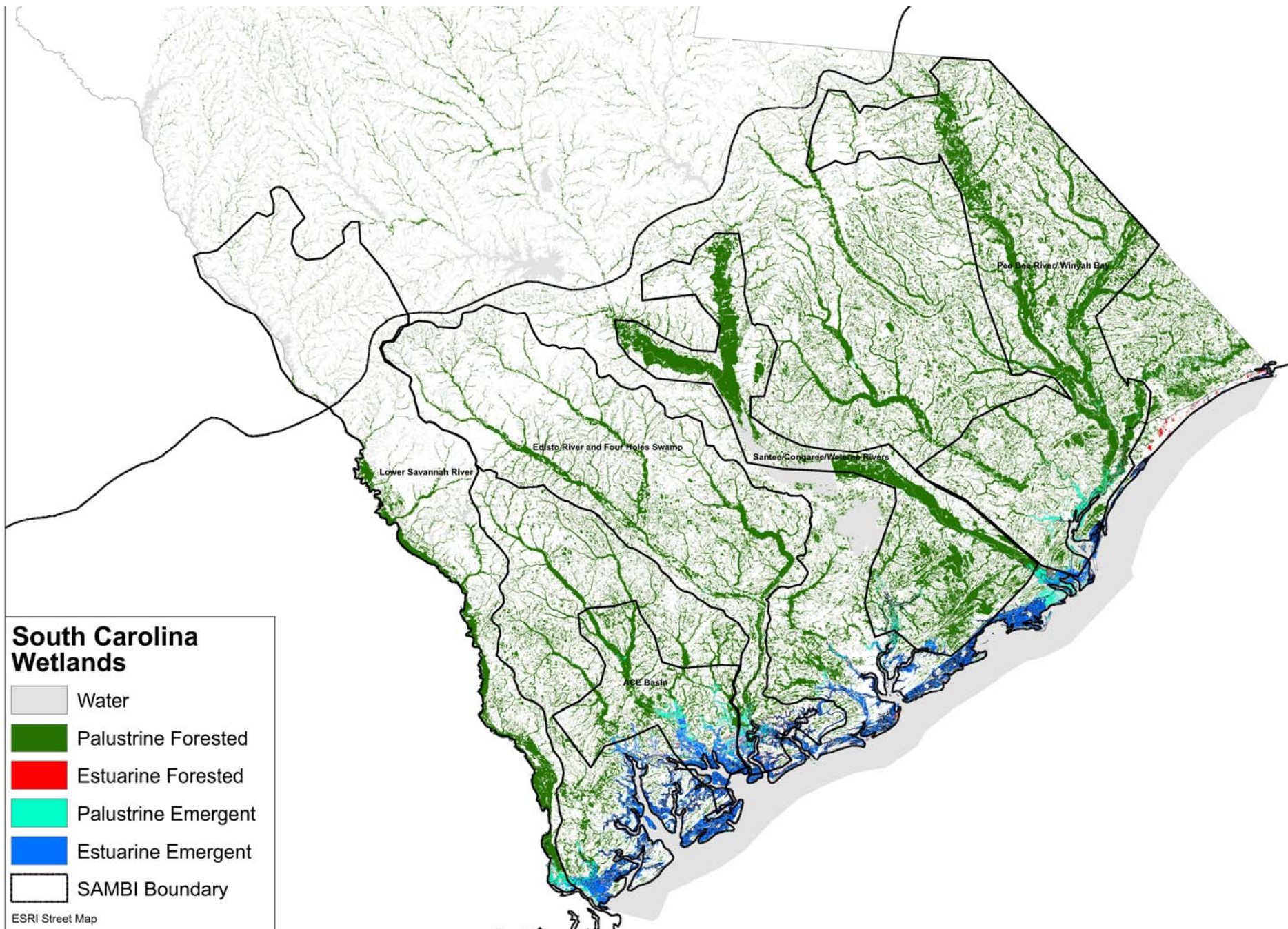
Forested Wetlands

- Approximately 1.1 million acres in SC
- 20% loss from 1952-1985
- Mostly in private ownership
- Timber Industry
- Largely “unmanaged” - silviculture









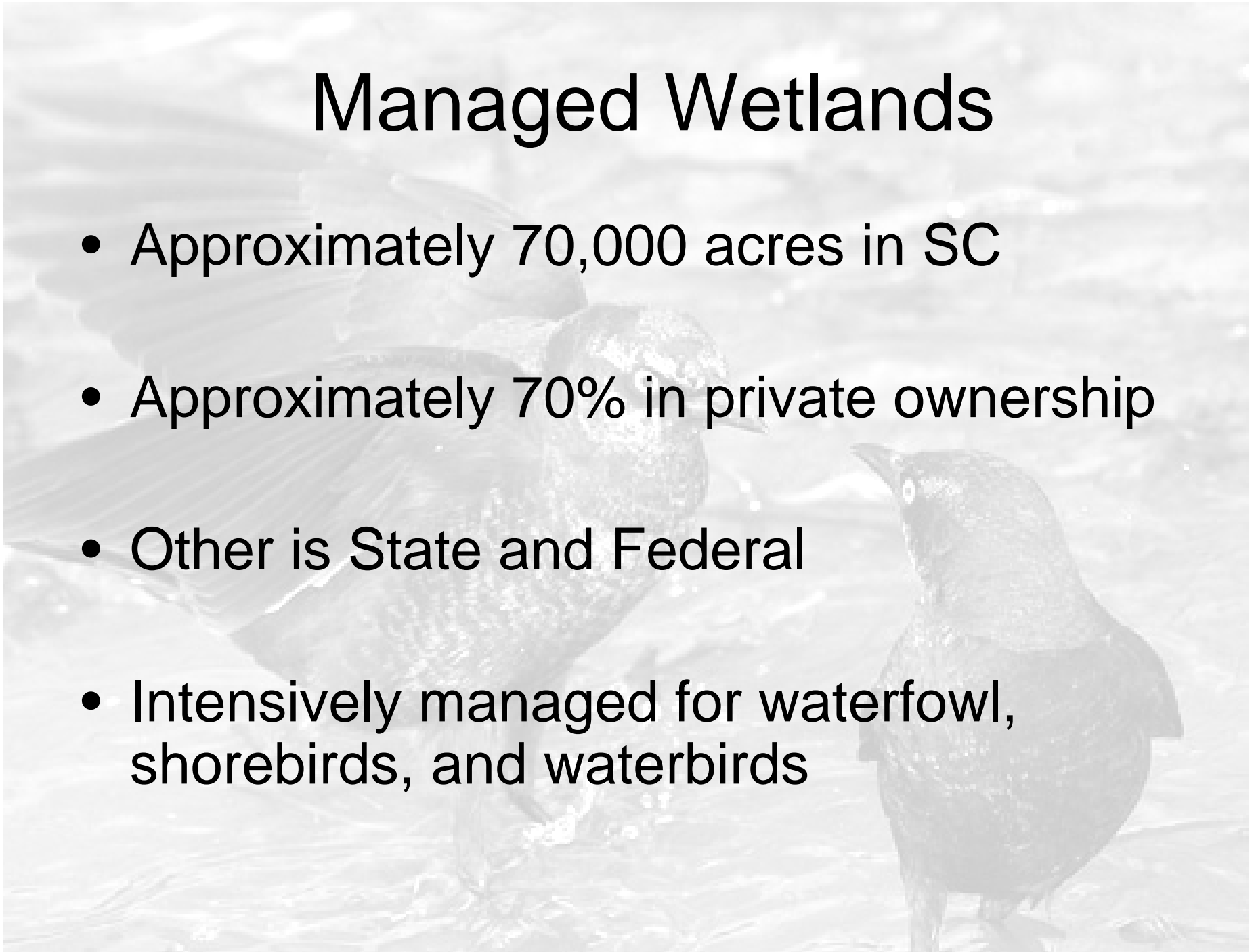
**Draft SE REGAP Land Cover
2001 (August 2007) with Audubon HCA's**

Atlantic Coast Joint Venture
Sanibel, FL 33957
December 2007



Managed Wetlands

- Approximately 70,000 acres in SC
- Approximately 70% in private ownership
- Other is State and Federal
- Intensively managed for waterfowl, shorebirds, and waterbirds



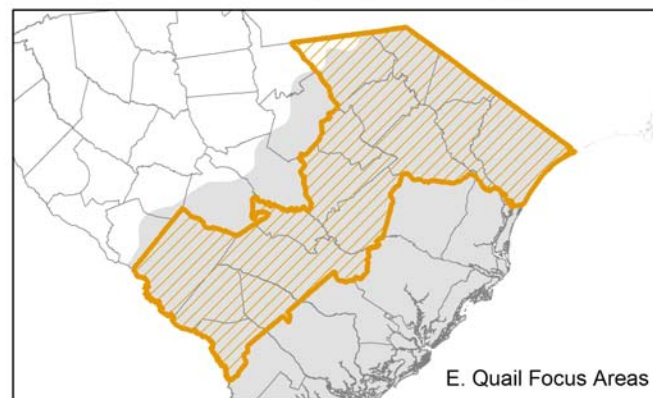
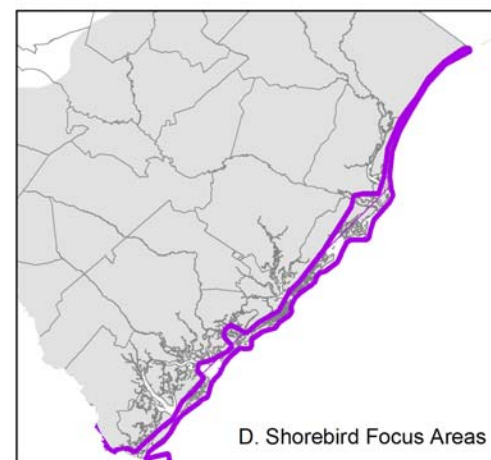
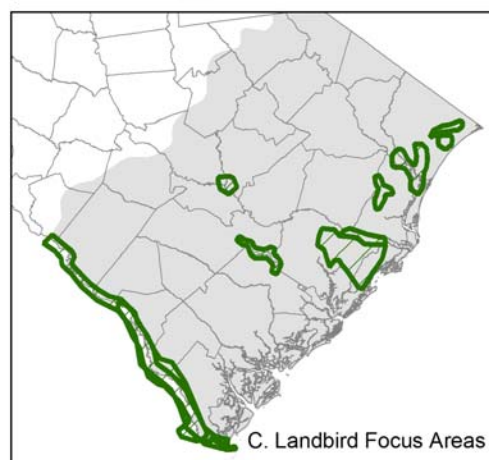
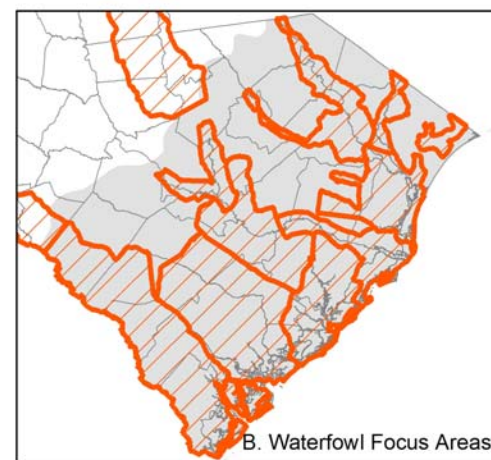
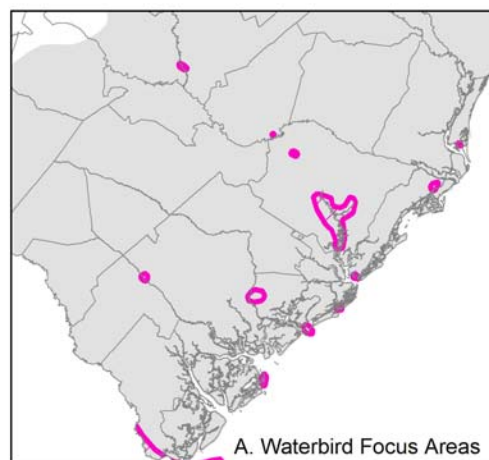


A grayscale photograph of two birds, possibly terns, standing on a rocky or pebbly shore. The bird on the left is in profile, facing right, with its wings slightly spread. The bird on the right is facing away from the camera, looking towards the left. The background is a soft-focus view of the water and more rocks.

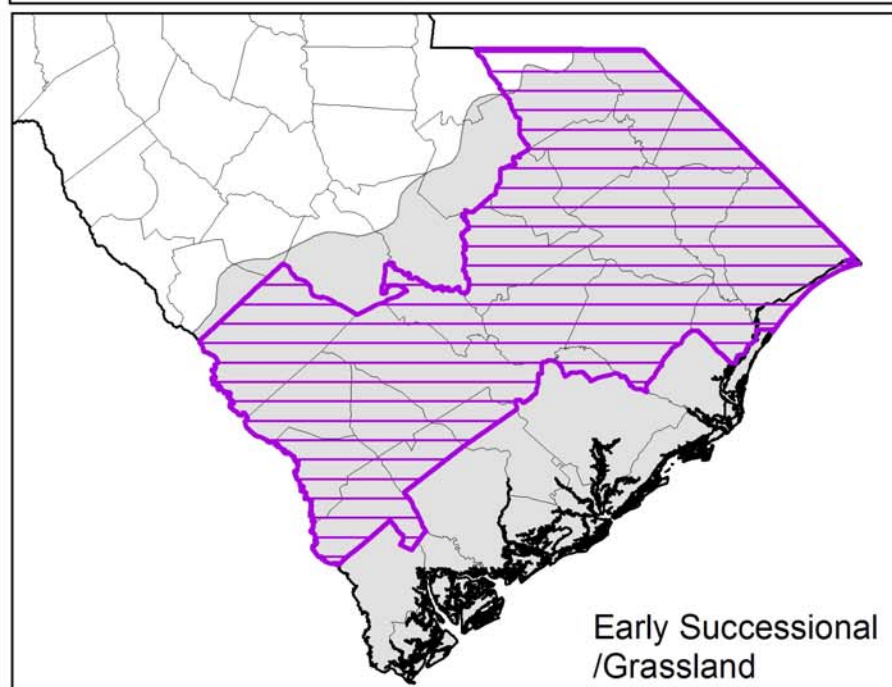
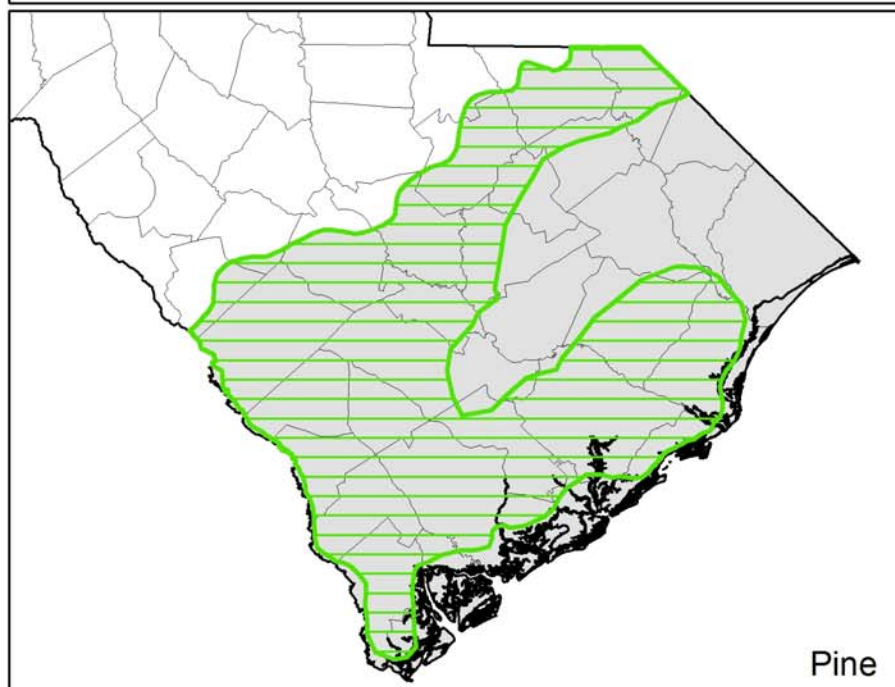
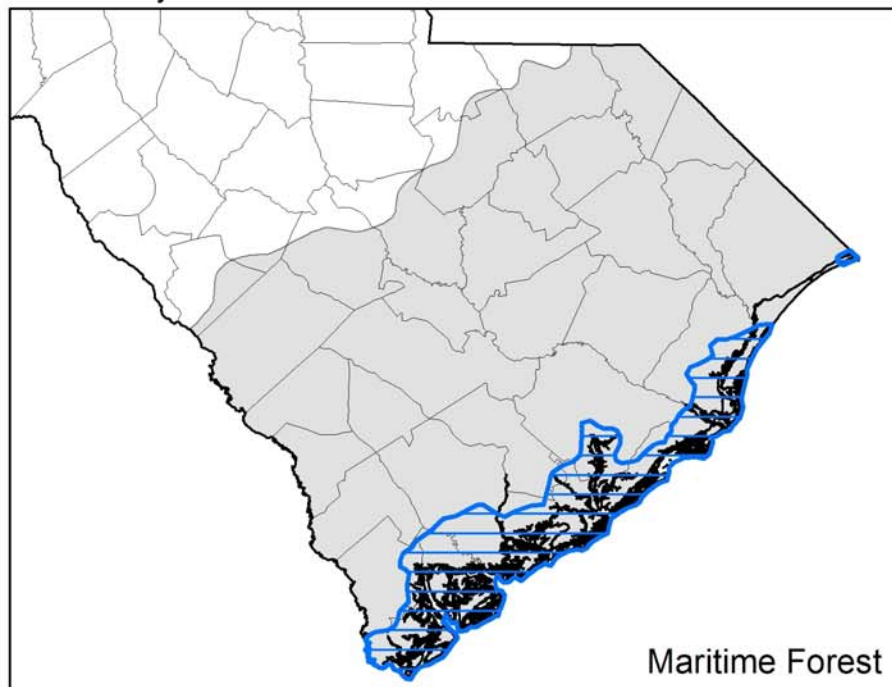
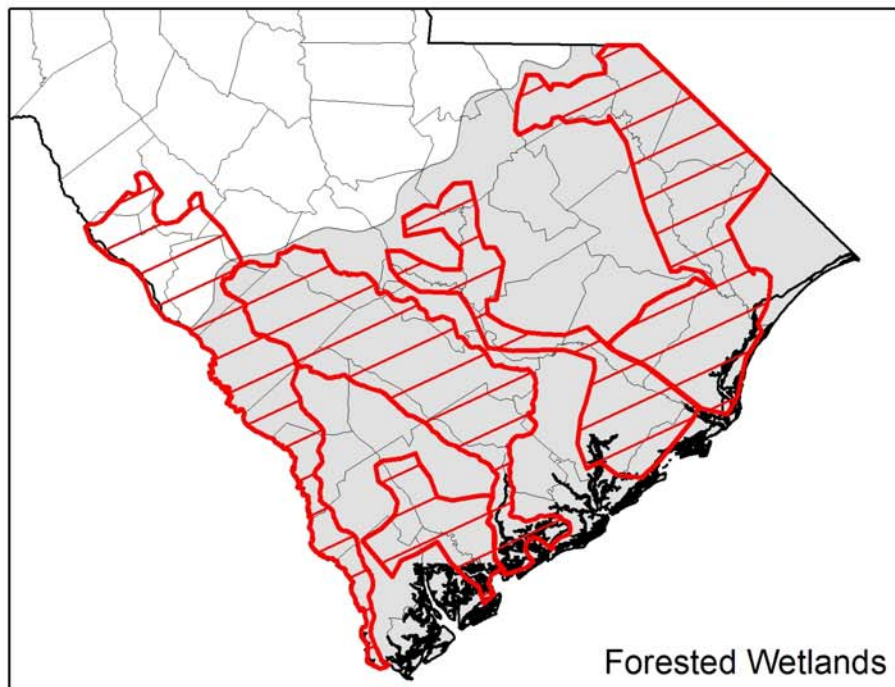
Protected Areas and Conservation Strategies

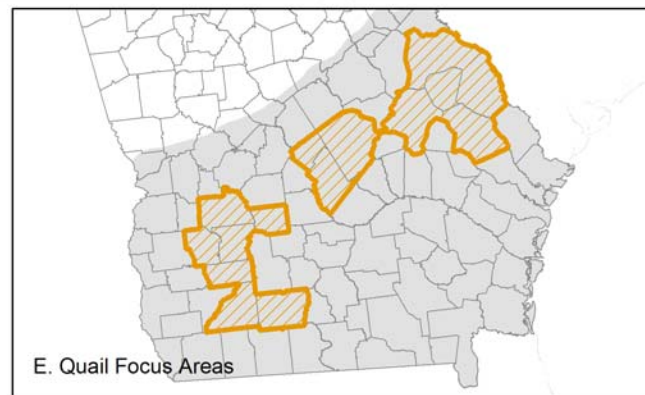
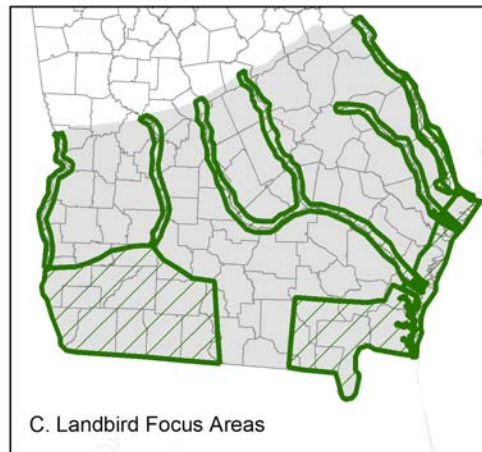
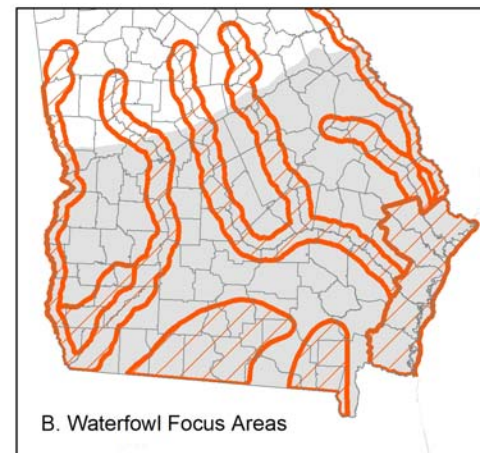
Conservation Planning

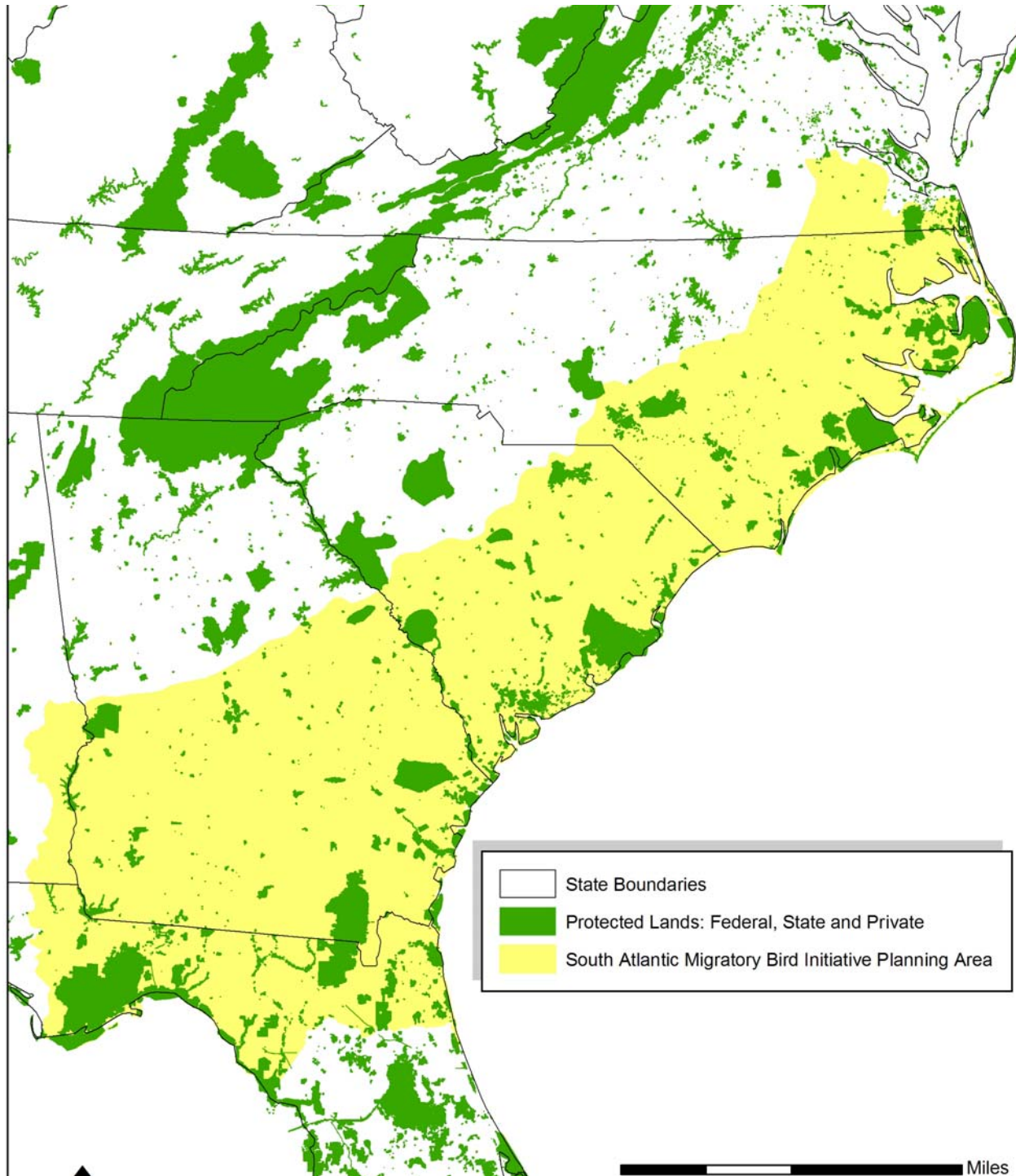
- Atlantic Coast Joint Venture Waterfowl Implementation Plan
- South Atlantic Migratory Bird Initiative
- State Wildlife Action Plans
- ACJV Landscape Conservation Design



SAMBI Focus Areas January 2008







Conservation Strategies

- Acquisition – federal, state, NGO
- Conservation easements – federal, state, NGO
(The Nature Conservancy, Ducks Unlimited, Inc., other land trusts)
- Restoration/enhancement of managed wetlands
- North American Wetlands Conservation Act
(Standard and Small)
- National Coastal Wetlands Conservation Grants

