

# Reliable locations of significant Rusty Blackbird flocks in South Carolina

Characteristics and shared features  
of the most reliable sites

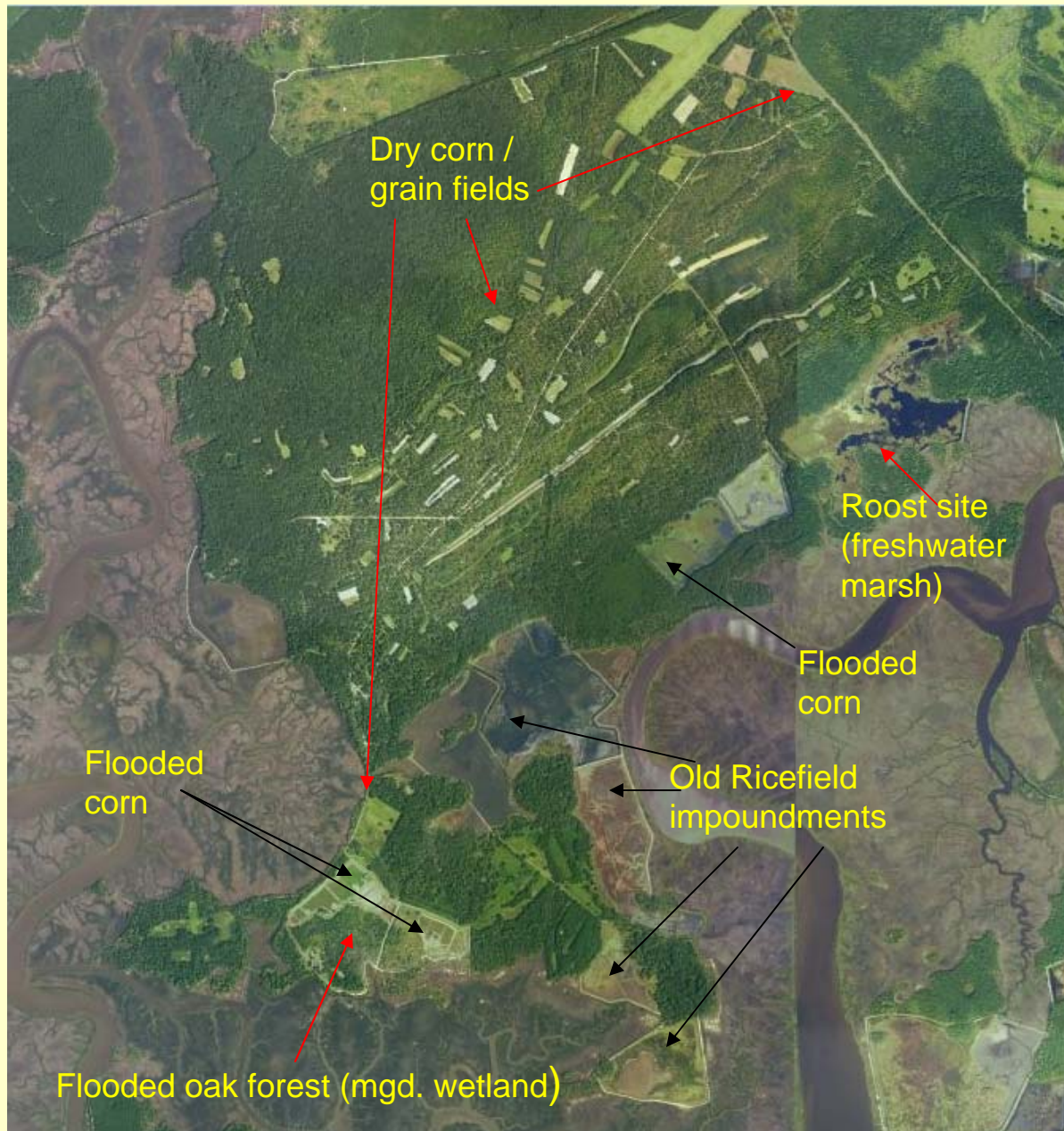
Nathan W. Dias

Cape Romain Bird Observatory

# Ashepoo Plantation

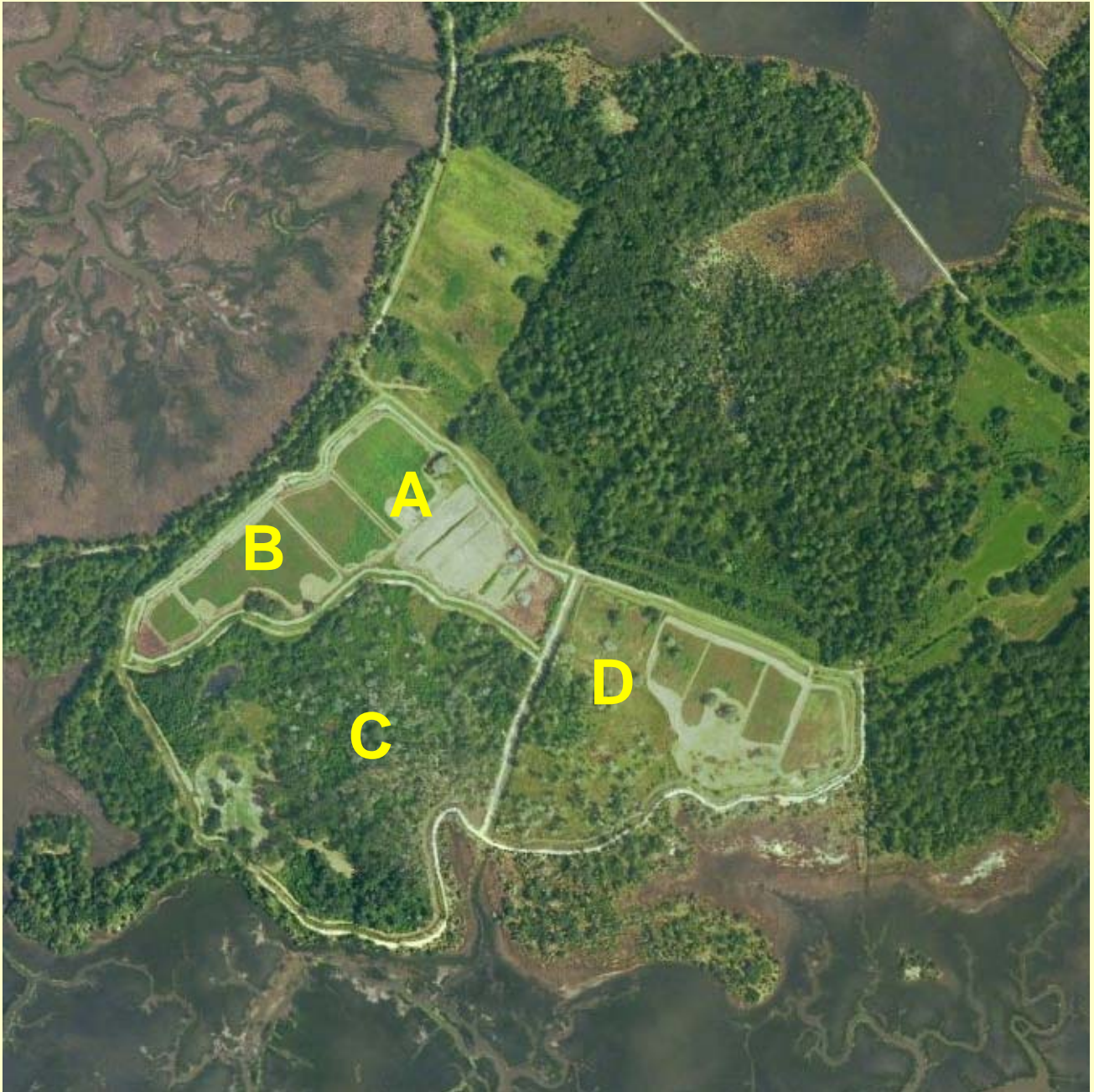
- **Located in the ACE Basin of SC**
- **10,000 acres of upland forests, managed wetlands, unmanaged forested wetlands and grain plantings (both upland and flooded).**
- **Managed for wildlife (hunting) and conservation, not profitability.**
- **Contains a significant Blackbird roost which is used by Red-winged Blackbirds and Rusty Blackbirds. Roost is in a large freshwater cattail marsh adjacent to salt marsh.**
- **RUBL have been observed feeding in dry cornfields, flooded cornfields, recently drained / draining cornfields, former ricefield impoundments (flooded and drained) and wooded wetlands.**

## Ashepoo - aerial view





## Ashepoo's flooded corn / oak impoundments



A





A



B





D





D



## Ashepoo blackbird roost

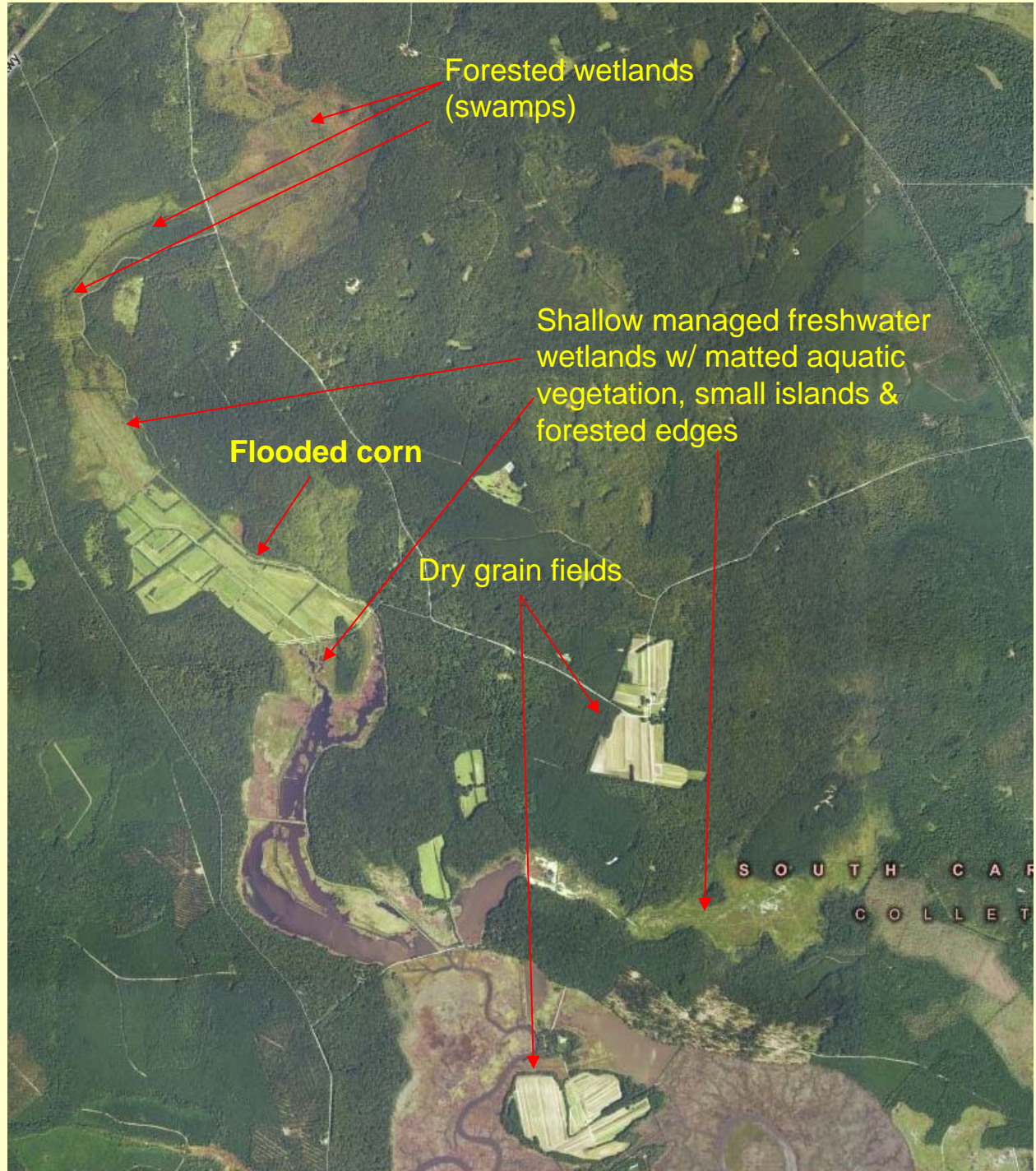




# Donnelley WMA

- **Located in the ACE Basin of SC**
- **8,000+ acres of upland forests, managed wetlands, managed forested wetlands and grain plantings (both upland and flooded).**
- **Intensively managed for game and nongame species, public education and recreation.**
- **RUBL have been observed feeding in dry grain fields, flooded cornfields, recently drained / draining cornfields, former ricefield impoundments (while flooded and drained) and wooded wetlands.**

# Donnelley WMA aerial view





**Hardwood swamp at Donnelley WMA where  
RUBL were banded in Jan / Feb 2007**





## Savannah NWR RUBL habitat





## Savannah NWR RUBL habitat





## Savannah NWR RUBL habitat





**Rusty Blackbird prey item at Savannah  
NWR Tupelo swamp**

