

An Alaska Perspective

Steve Matsuoka
U.S. Fish & Wildlife Service
&
Boreal Partners in Flight (BPIF)



© Ted Swem

Background

- Sam Droege visited Alaska (2002).
- USFWS, Endangered Species Program in Alaska: a potential candidate species (2003).
- Informal status summary by K. Hannah, Alaska Bird Observatory (2004).
- BPIF adopted RUBL as species of highest concern (2004).
- IRBTG formed (2005).



© Ted Swem

Declines among boreal wetland birds

Top 15 declining species 1966-2004 BBS Survey-wide

Lesser Yellowlegs	-7.2
Rusty Blackbird	-5.9
Horned Grebe	-4.3
Short-eared Owl	-3.9

Lesser Scaup, Scoters

Declines in Alaska 1980-2005

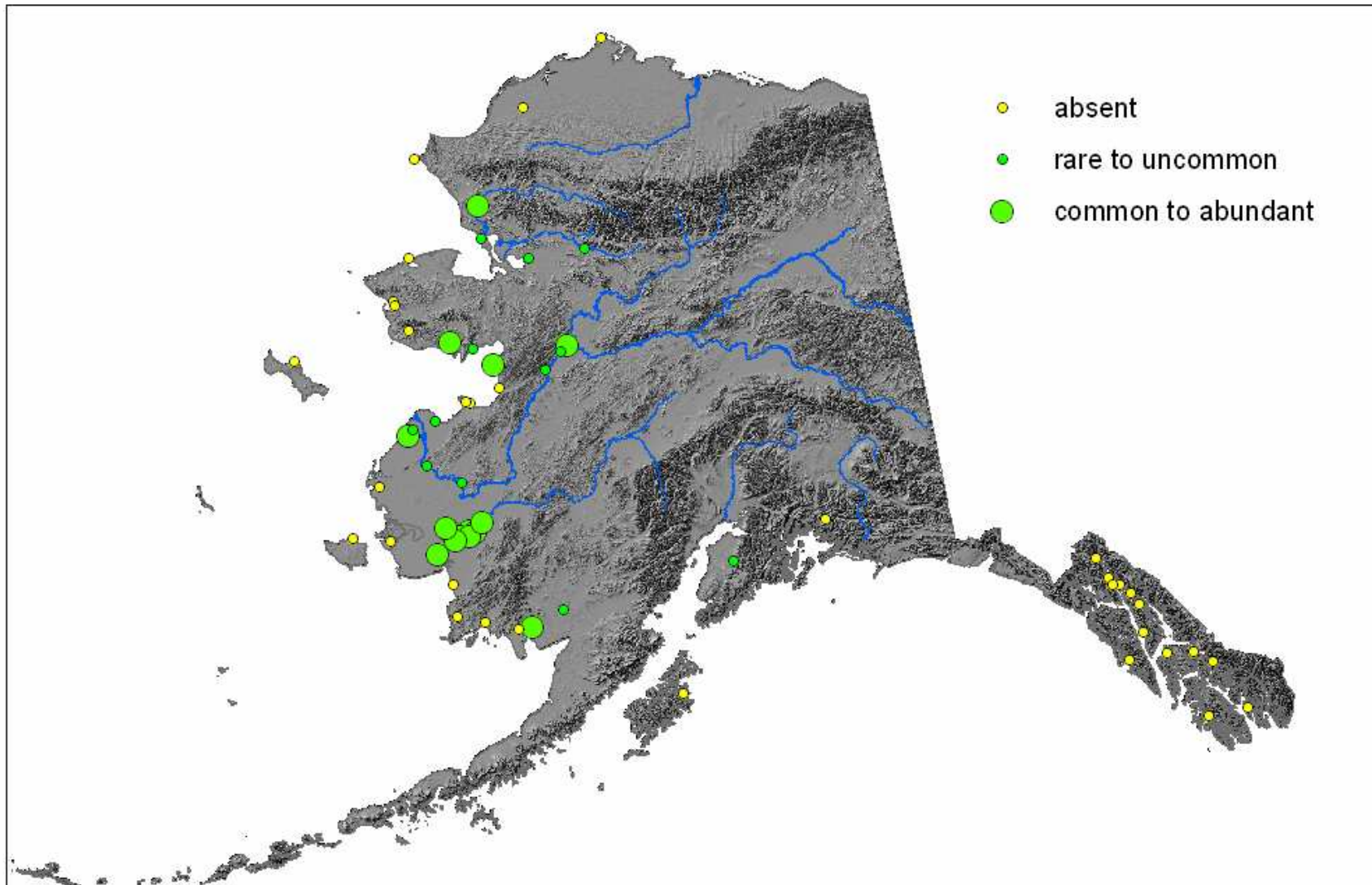
Species	Trend	<i>P</i>	<i>n</i>	Abundance
Rusty Blackbird	-5.2	0.05	27	0.87
Blackpoll Warbler	-3.0	0.02	53	6.04
Olive-sided Flycatcher	-2.3	0.10	55	1.52
White-crowned Sparrow	-1.7	0.05	75	28.50
Hermit Thrush	-1.6	0.05	67	5.83

BPIF

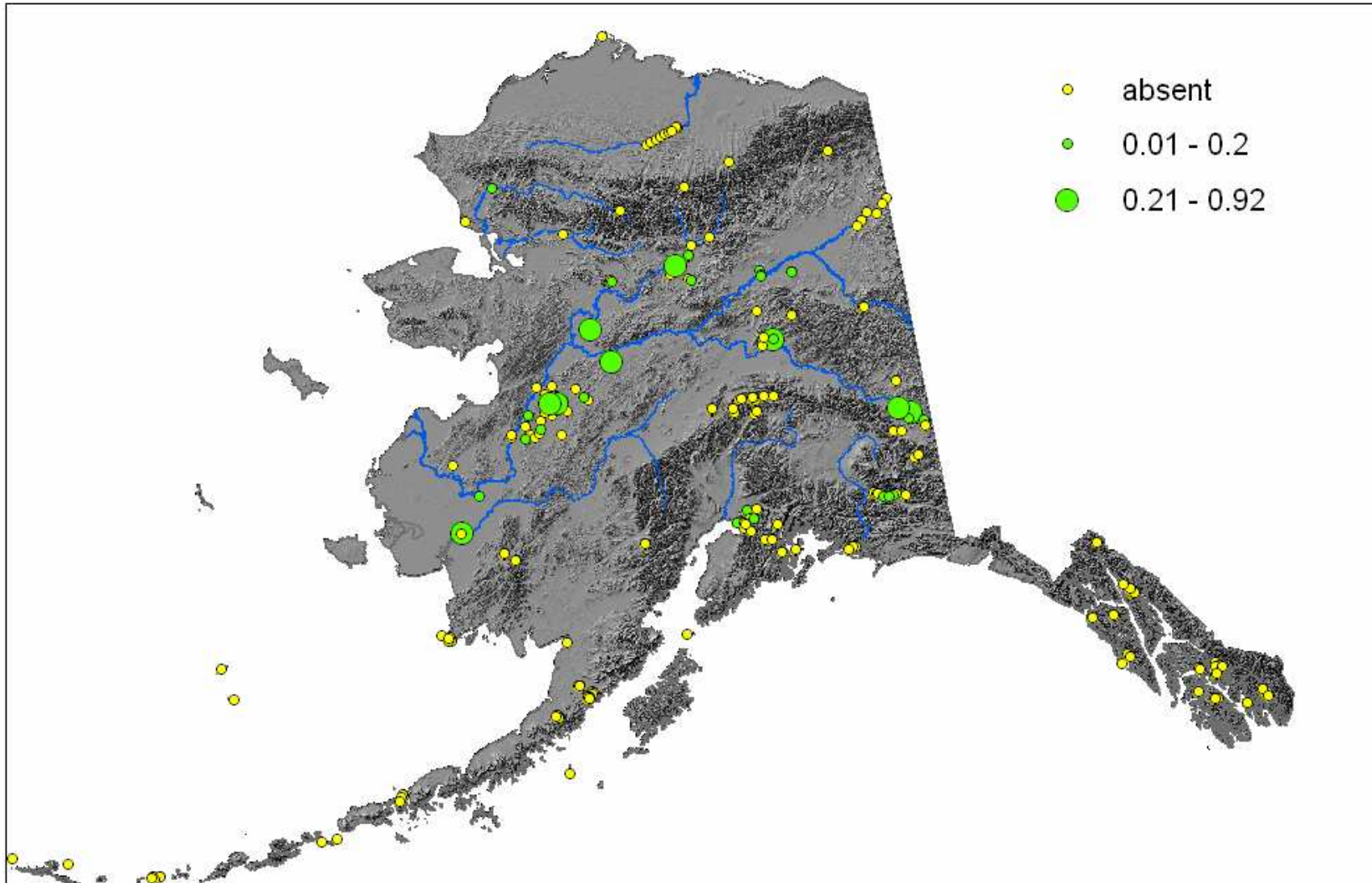


- Collected feathers for isotope study (K. Hobson and R. Greenberg).
- Collected blood for mercury analysis (D. Evers).
- Summarize existing data on breeding distribution (T. Gotthardt, ADF&G, & BPIF).

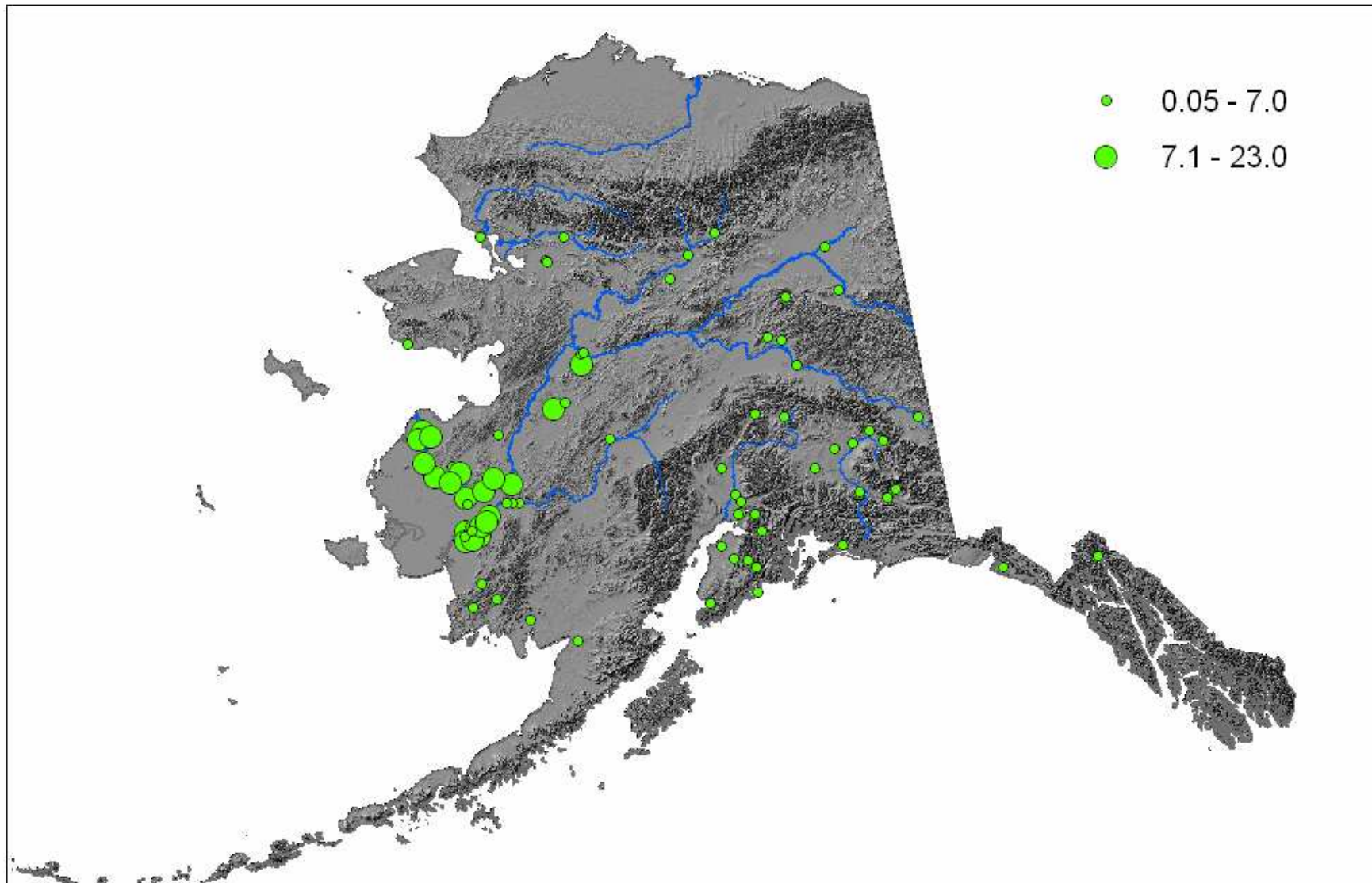
Army National Guard Checklists



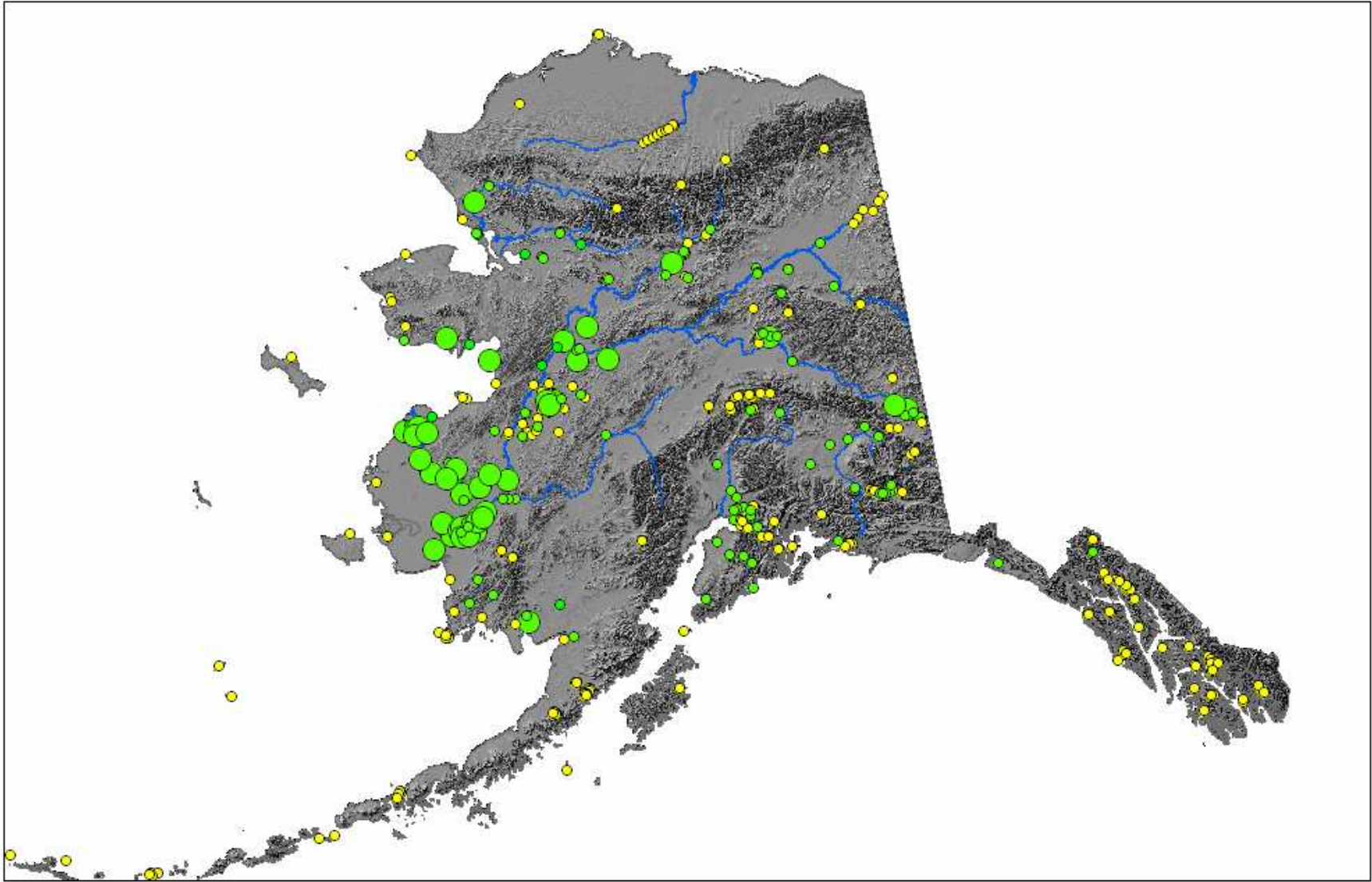
Alaska Landbird Monitoring Survey



BBS



Breeding Distribution





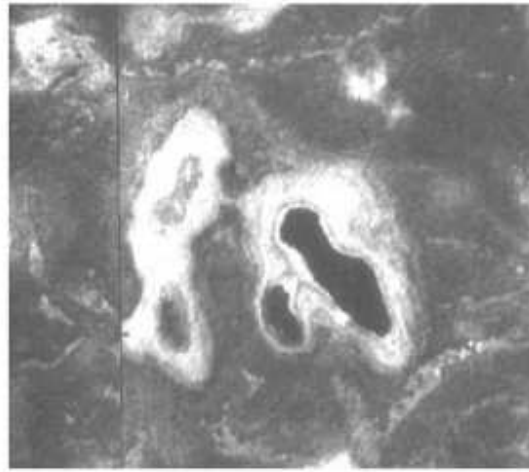
R. Corcoran

Shrinking wetlands 1950–2000

(Riordan et al. 2006)



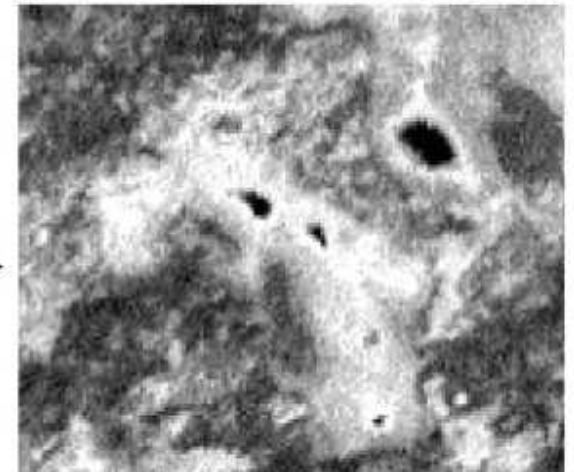
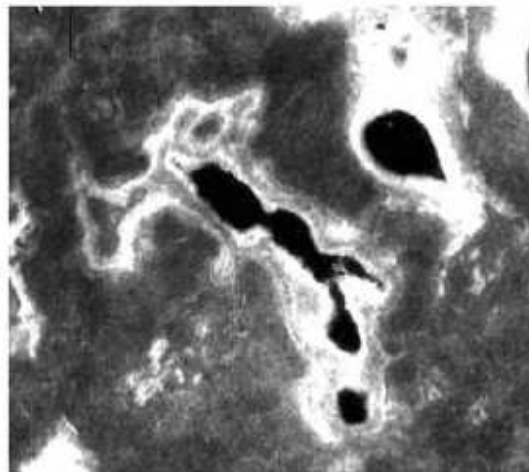
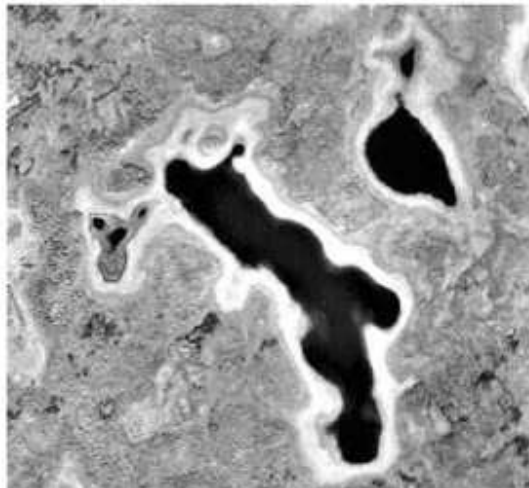
1950s



1970s



2000



Work so far

1. Status summary by K. Hannah (2004).
2. Summarize distribution & abundance (2005).
3. Contributed tissues for stable isotope & mercury analyses (2005).
4. Field studies of nesting birds at 3 locations (2006).
 - More later by D. Shaw & P. Meyers

Upcoming work

1. Nesting birds at Innoko NWR (R. Corcoran).
2. Habitat use and reproduction on four DoD installations (D. Shaw & S. Matsuoka).
 - Breeding density & habitat use.
 - Nest-site selection & nest survival.
 - Capture & mark adults for survival analyses.
 - Contaminants: eggs & blood.
 - Virus screening.
3. Expand work to State Game Refuges in 2008 (D. Tessler).
4. FWS Alaska is considering a candidate assessment (T. Swem).

Acknowledgments

- Susan Sharbaugh & David Shaw, ABO
- Tracy Gotthardt and Jodi McClory, ANHP
- Mary Rabe & David Tessler, ADF&G
- Pam Sinclair, CWS
- Paul Meyers, USFS
- Robin Corcoran & Ted Swem, USFWS
- Melissa Cady and Colleen Handel, USGS
- Members of BPIF who contributed survey data.



© Ted Swem



© Ted Swem