

Rusty Blackbird Migration Banding Data

More *Questions*
than Answers...





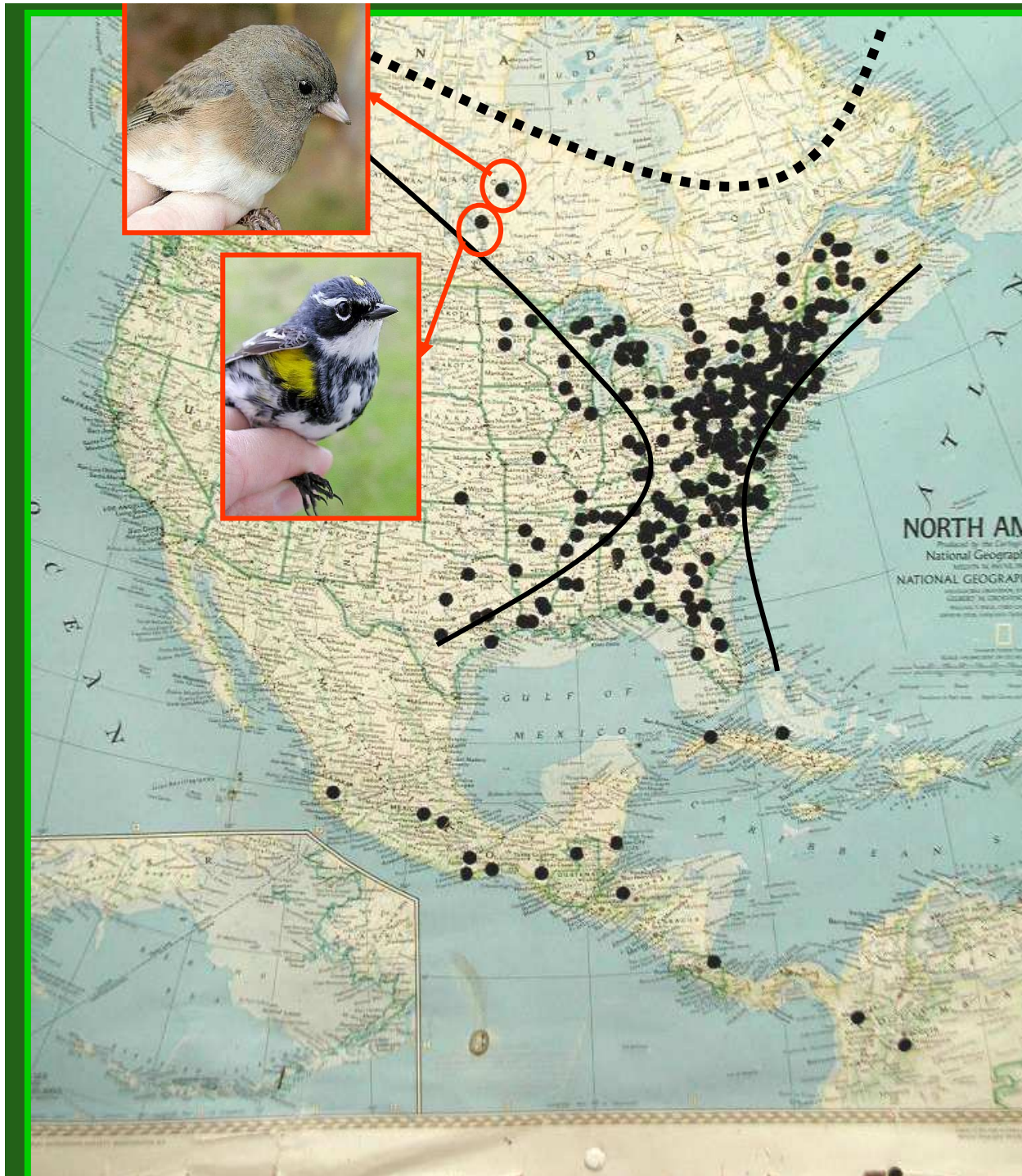
BOREAL BIRD COMMUNITIES AT MIGRATION BANDING STATIONS: Banding as a means for effective monitoring

Adrienne J. Leppold, Robert S. Mulvihill, Robert C. Leberman

Comunidades de Pájaros Boreales en Estaciones de
Marcaje Migratorio: El Marcaje como un
Método efectivo de Monitoreo

Background photo from
<http://www.borealbirds.org/index.html>





Numerous foreign recoveries of our banded birds northwest of Powdermill, in line with the long axis of the Great Lakes

Regular occurrence of recognizable NW subspecies in our migration banding samples, e.g.,

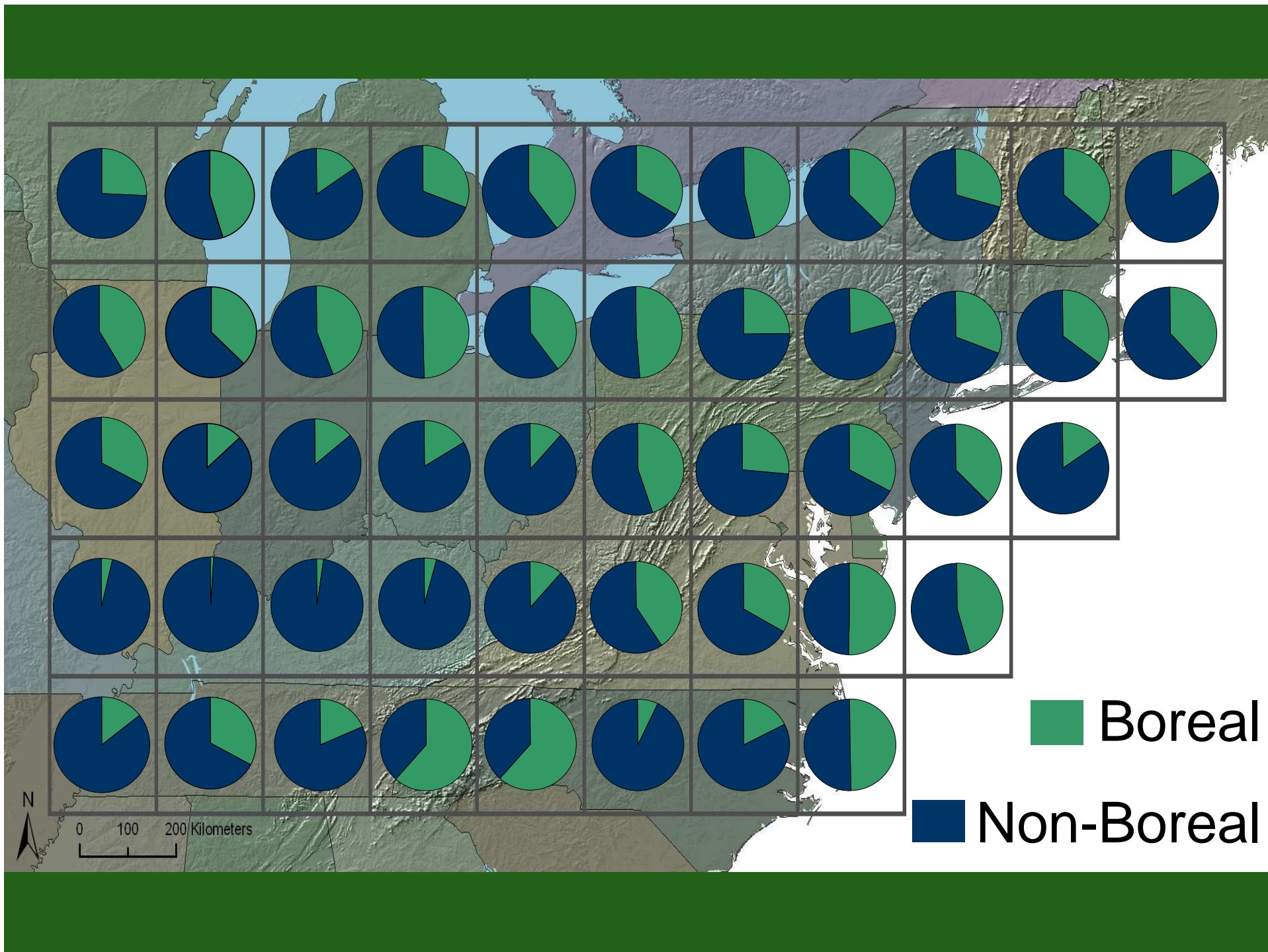
Dark-eyed Junco
Junco hyemalis cismontanus

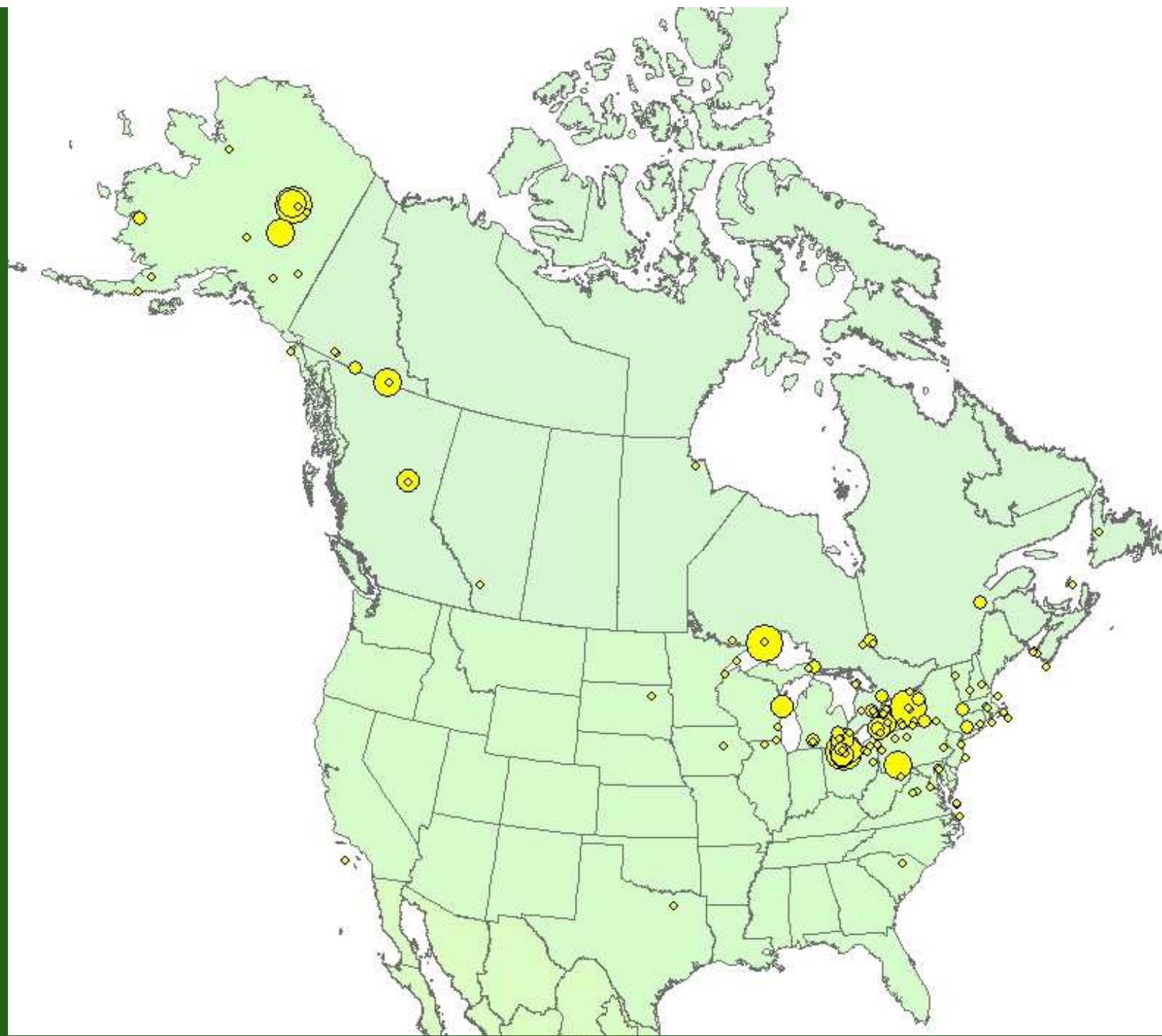
Yellow-rumped Warbler
Dendroica coronata hooverii

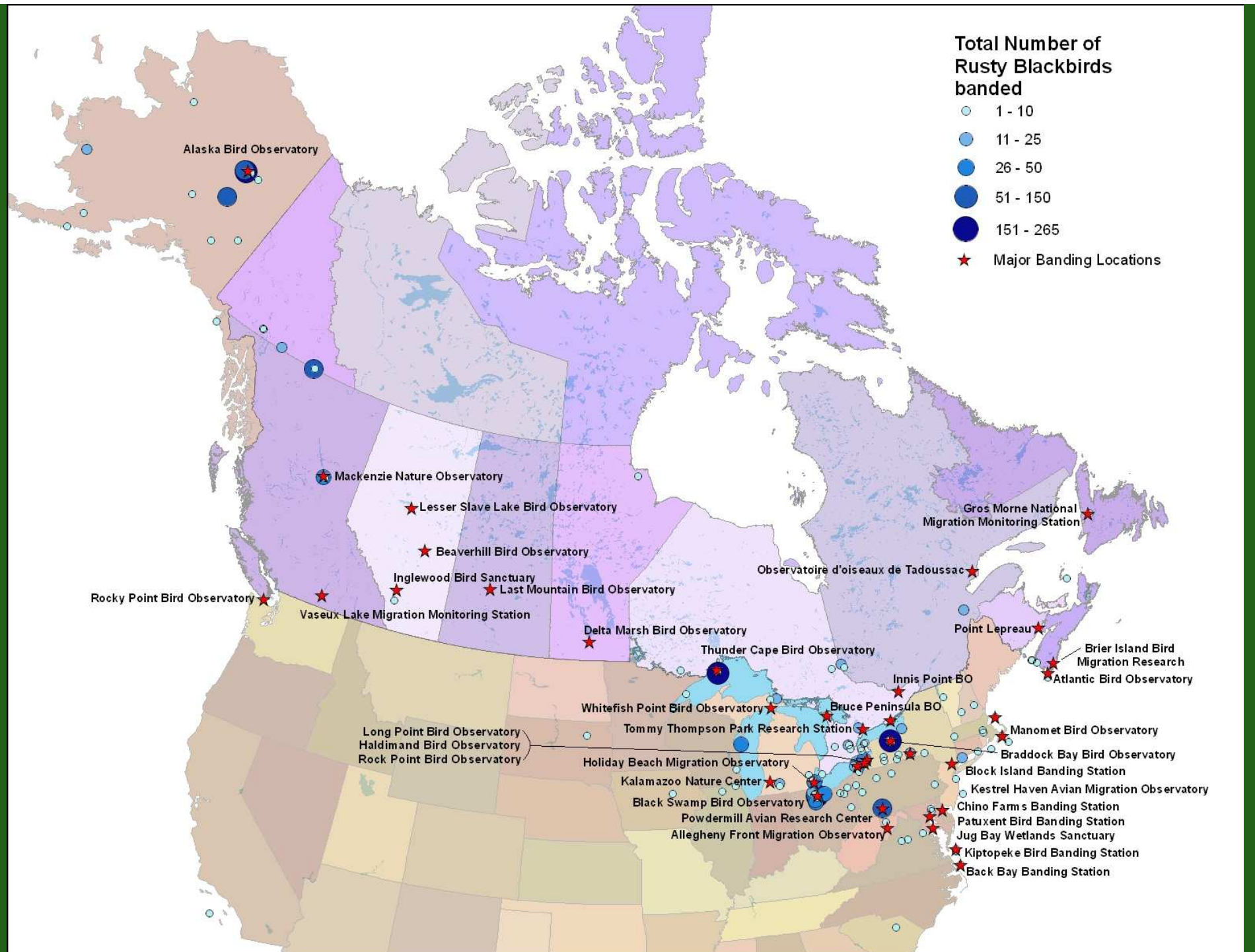
Hypothesis

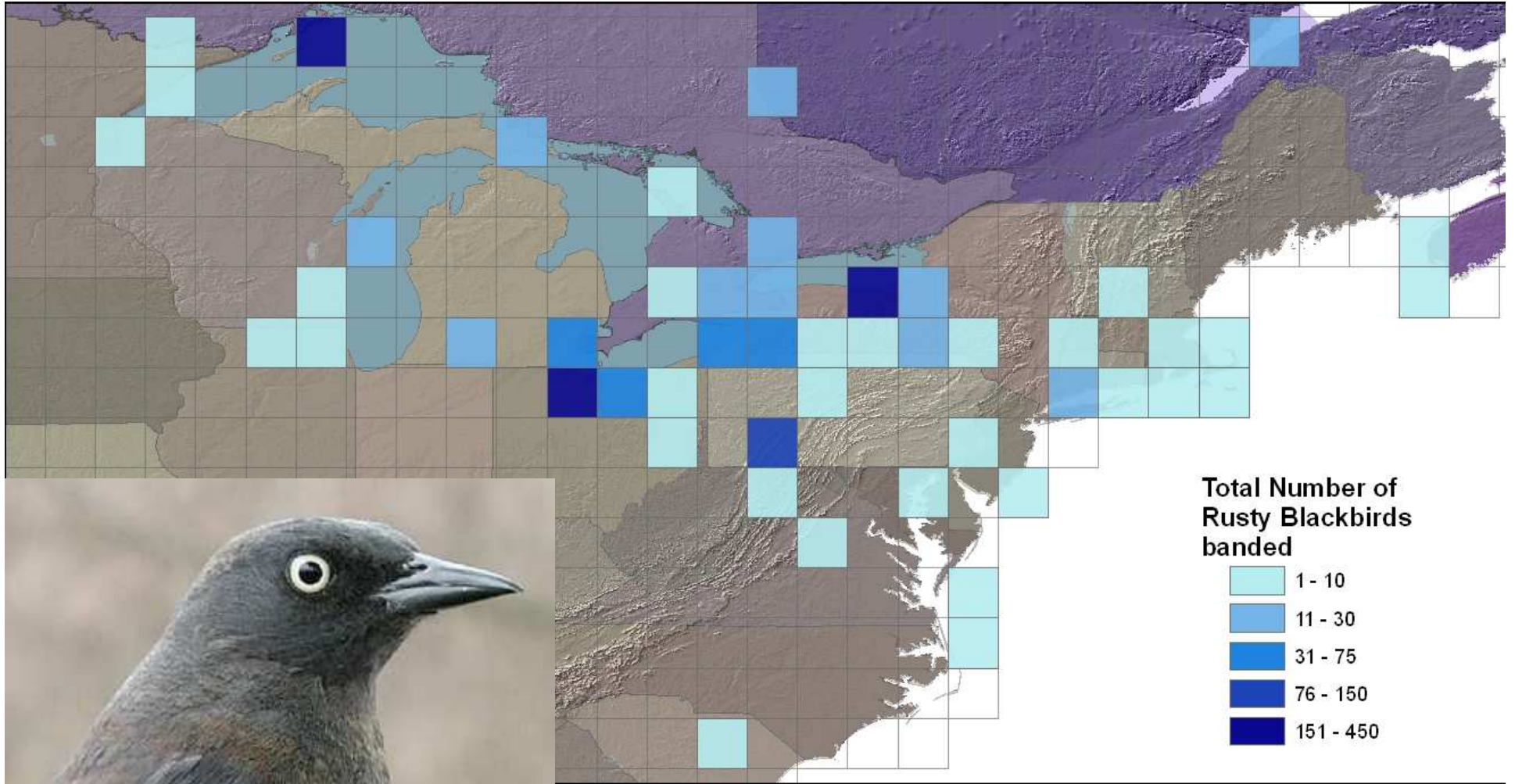
During migration, a large percentage of passerines and near passerines from the boreal forest (specifically Bird Conservation Region's 7 and 8) funnel through the Eastern U.S. – staging particularly along the Great Lakes and then channeling through the mid-Appalachians

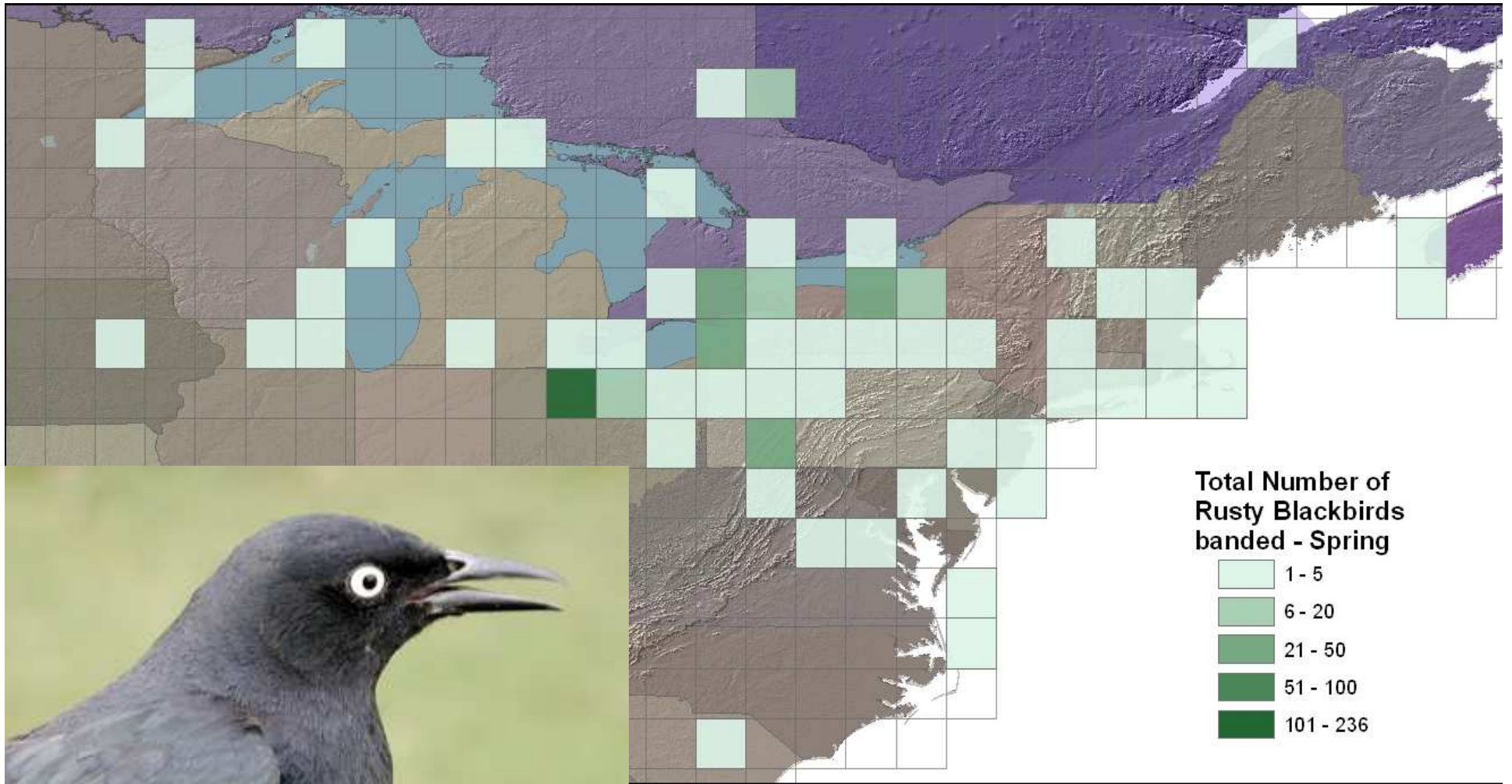


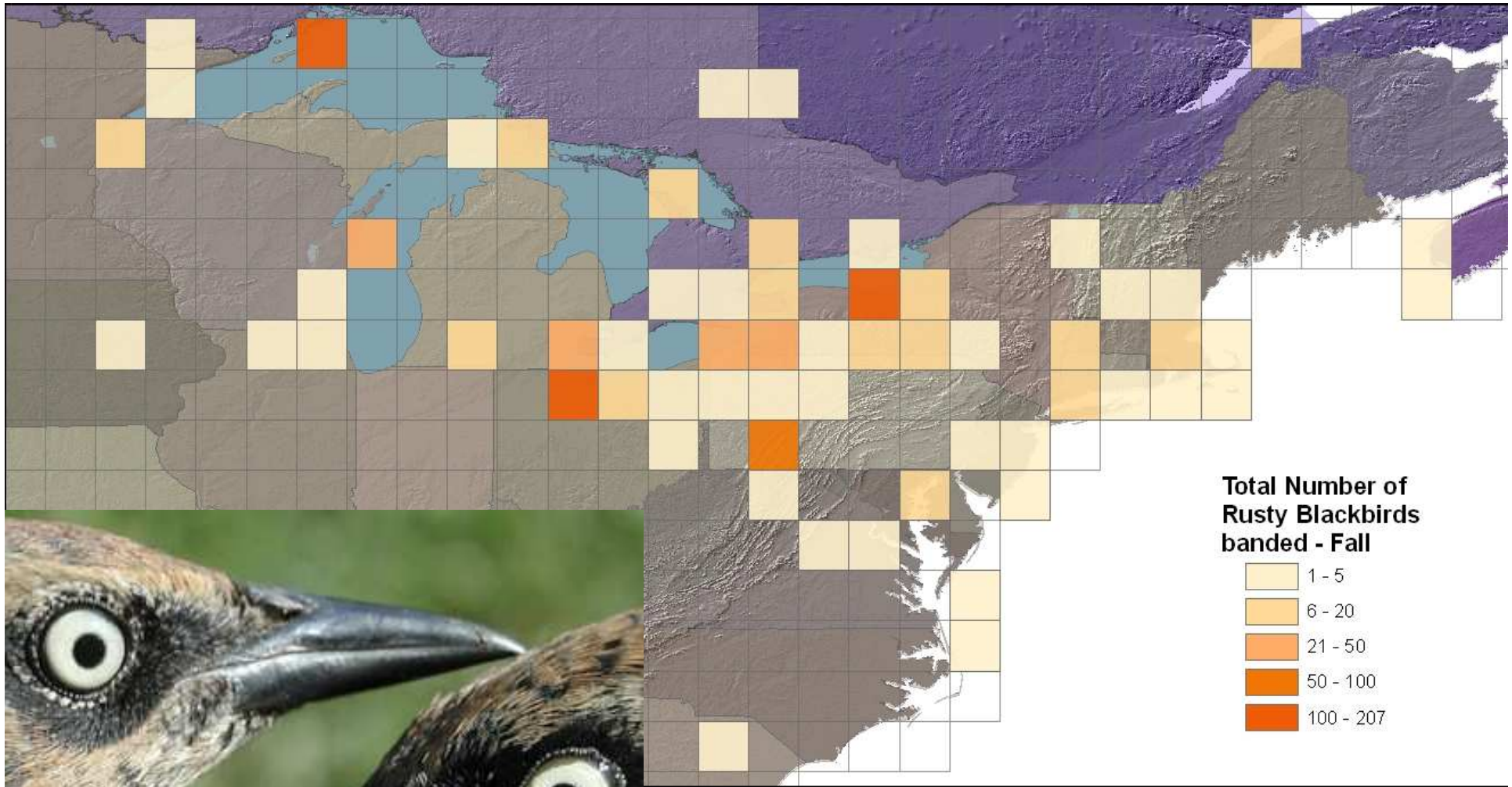


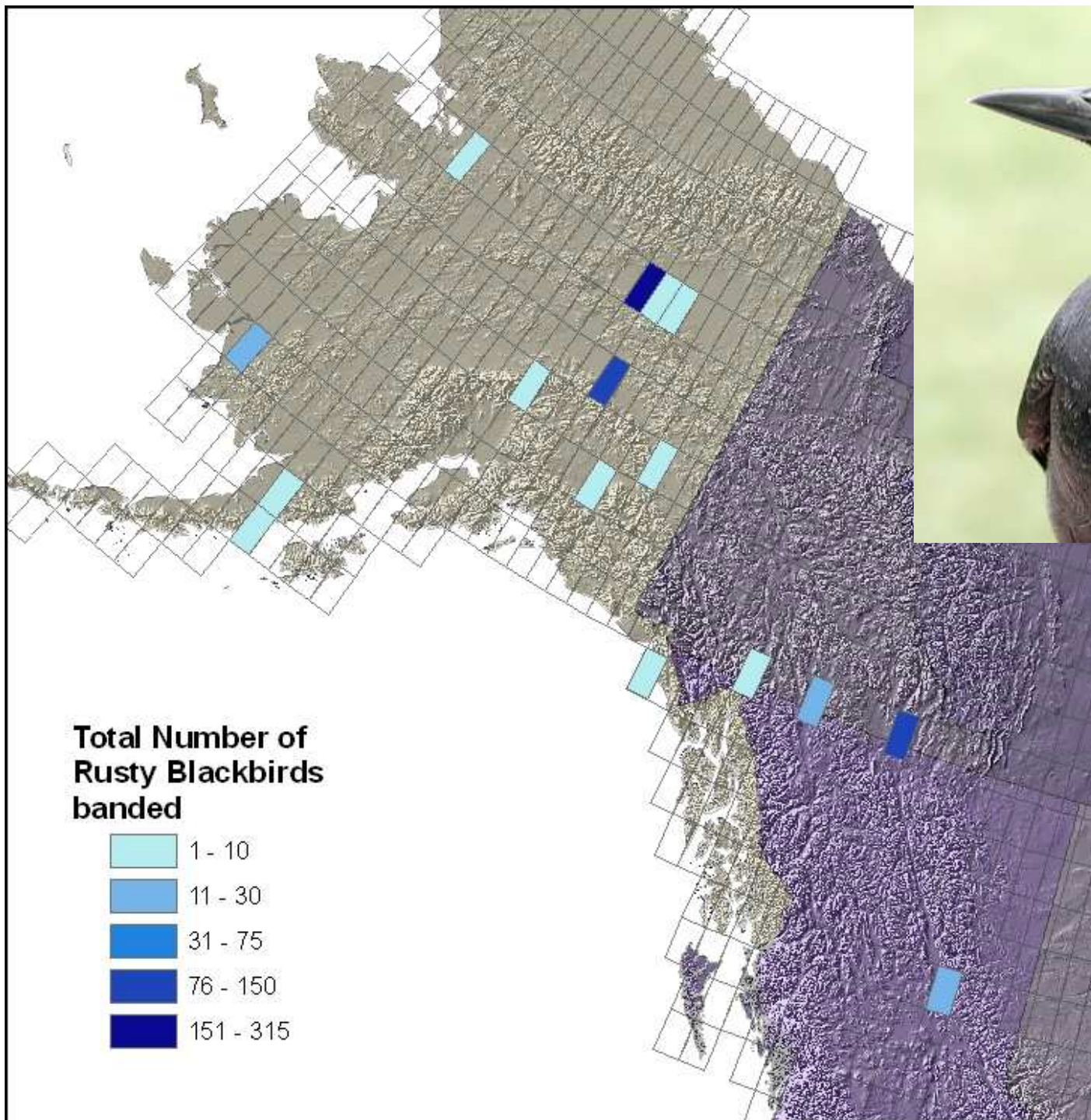


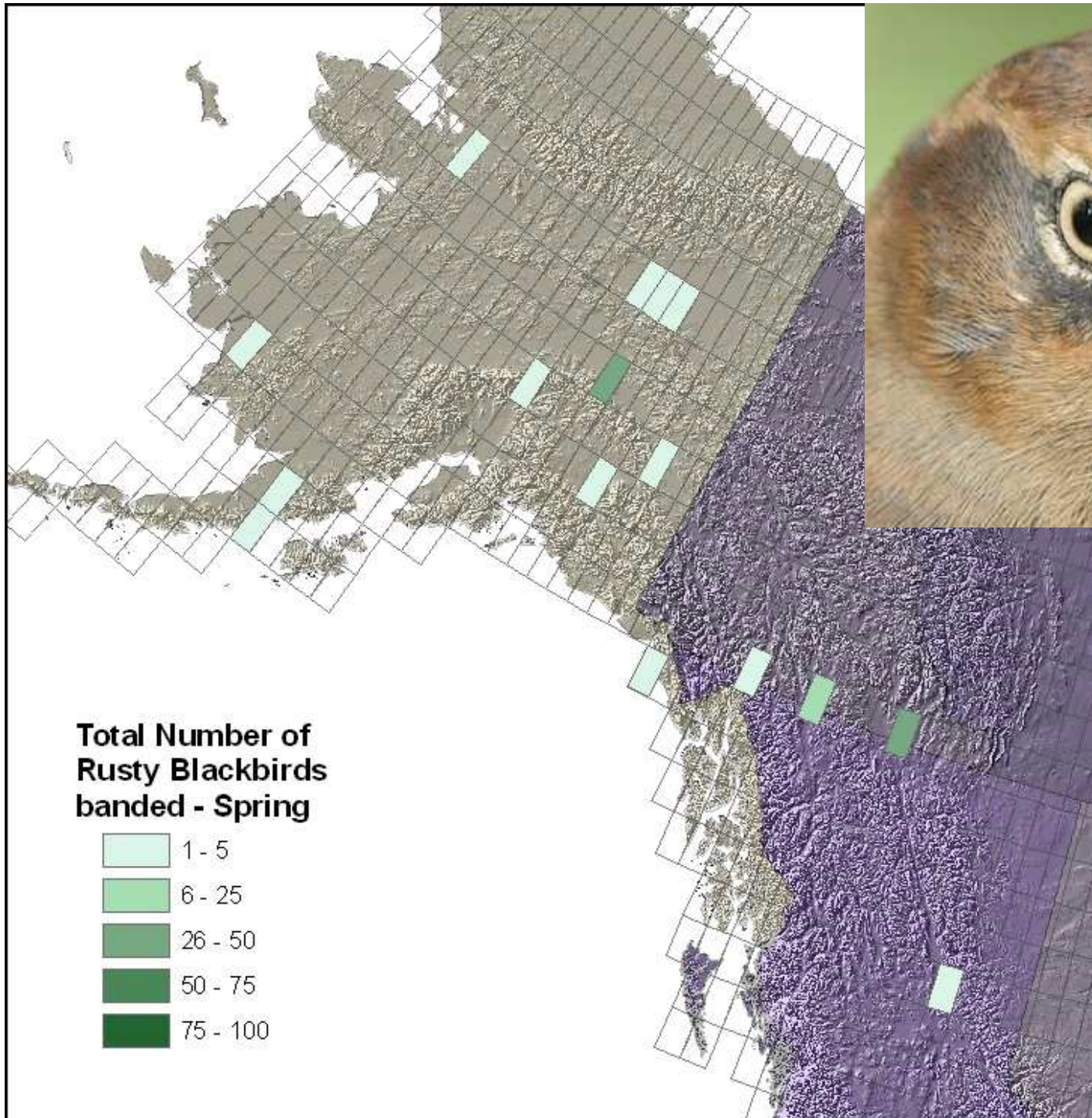


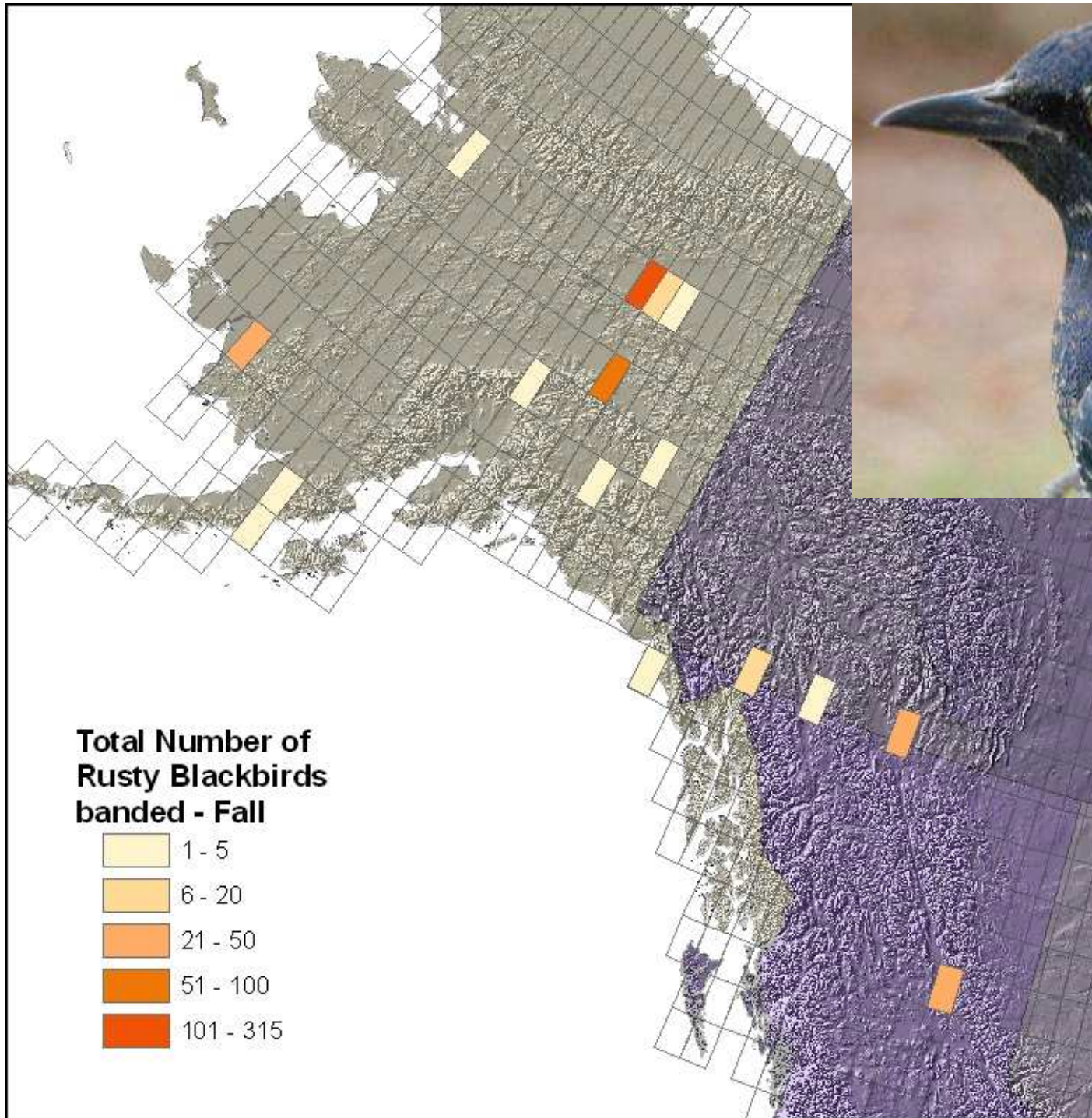






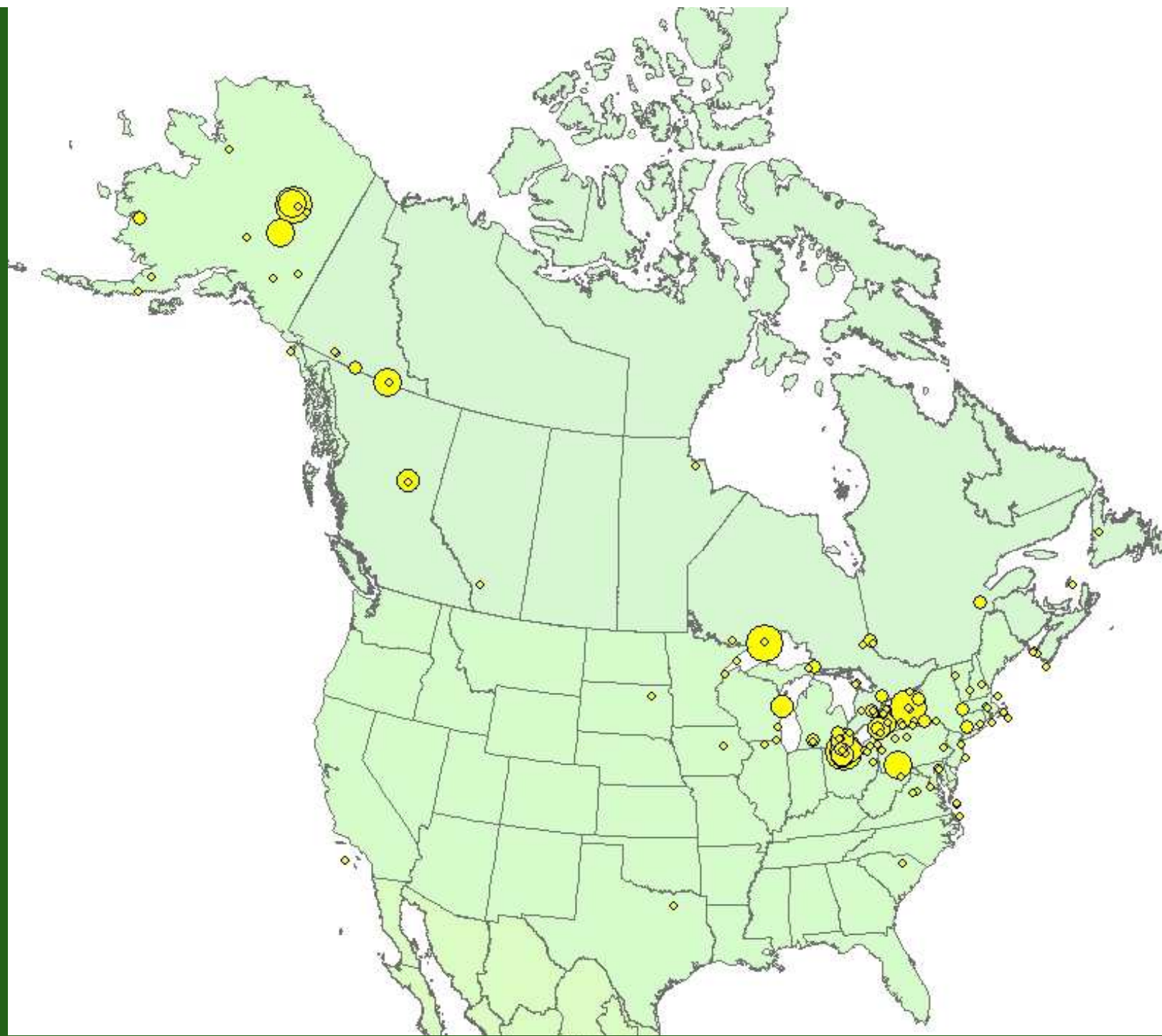






Summary

- Migration patterns along the Great Lakes and South along the Appalachian Ridges
- Interesting gap in mid-Canadian Provinces
- Data suggests separation between inland and coastal sites
 - Does this suggest unique breeding populations (NW vs. NE)



Summary

- Migration patterns along the Great Lakes and South along the Appalachian Ridges
- Interesting gap in mid-Canadian Provinces
- Data suggests separation between inland and coastal sites
 - Does this suggest unique breeding populations (NW vs. NE)
- Gap in winter banding
 - > increased banding value

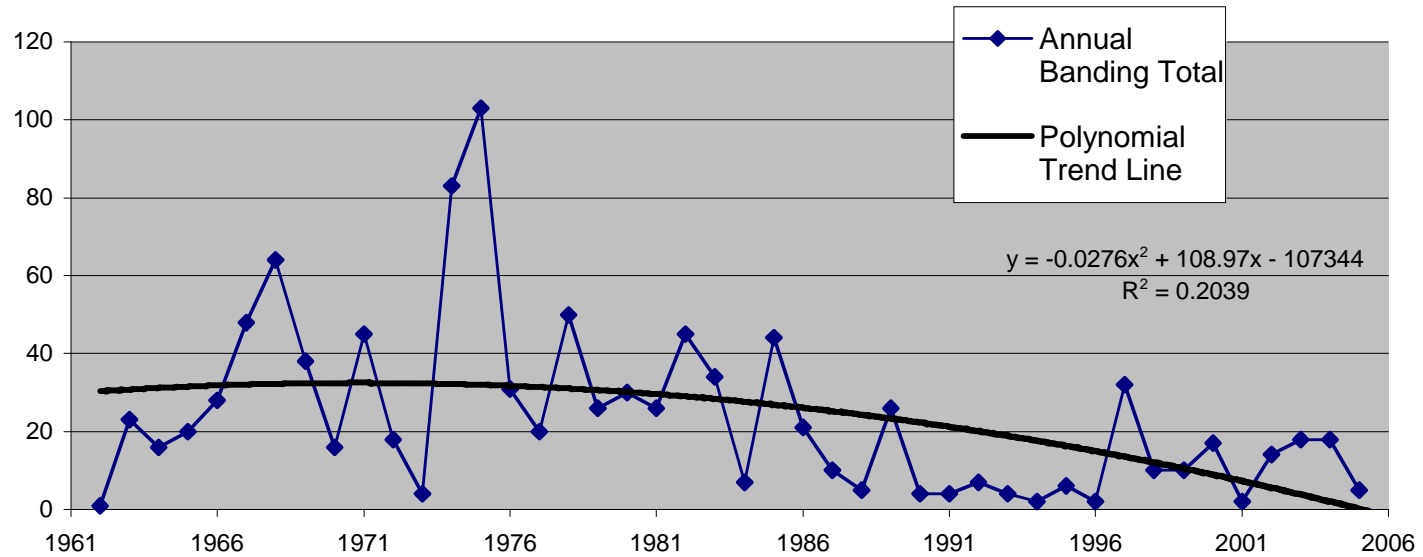
Future Directions



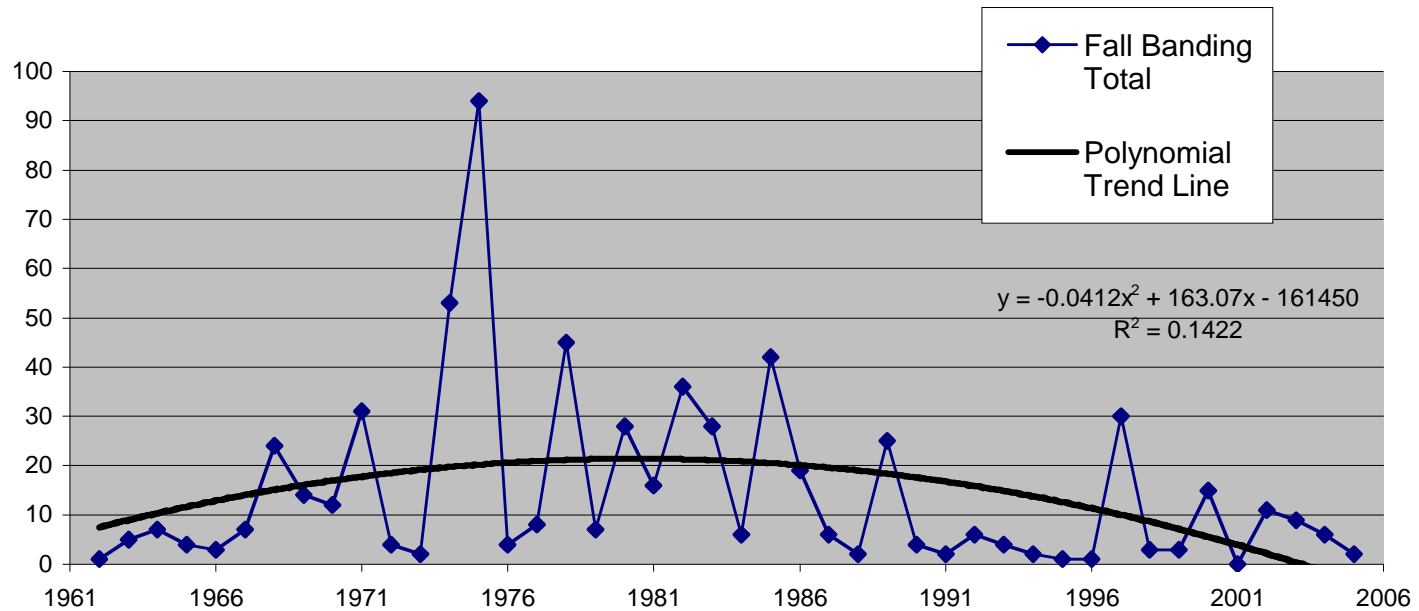
What role can migration banding data play in Rusty Blackbird conservation?

- Collection of demographic data and tissue samples
- Shows us concentrations of birds - Are these habitats in protected areas?
- Assessing population trends?

Long-term trend in annual banding totals for Rusty Blackbird
at Powdermill Nature Reserve



Long-term trend in fall banding totals for Rusty Blackbird
at Powdermill Nature Reserve



Future Directions



What role can migration banding data play in Rusty Blackbird conservation?

- Collection of demographic data and tissue samples
- Shows us concentrations of birds - Are these habitats in protected areas?
- Assessing population trends? **No**, unless....

Established sites in the U.S. incorporate one or more additional sampling methods used in the CMMN (daily incidental observations, area census counts, visible migration counts)
= more robust Daily Estimated Totals (DET)

The Next Step

- Increase RUBL capture efficiency

Target netting in prime stopover/roosting habitats

Use larger mesh net 36-38mm

Audio Lures

Decoys and bait?

- Establish N.A. RUBL sampling protocol following the CMMN scheme

Calling all
RUBL
banders!

